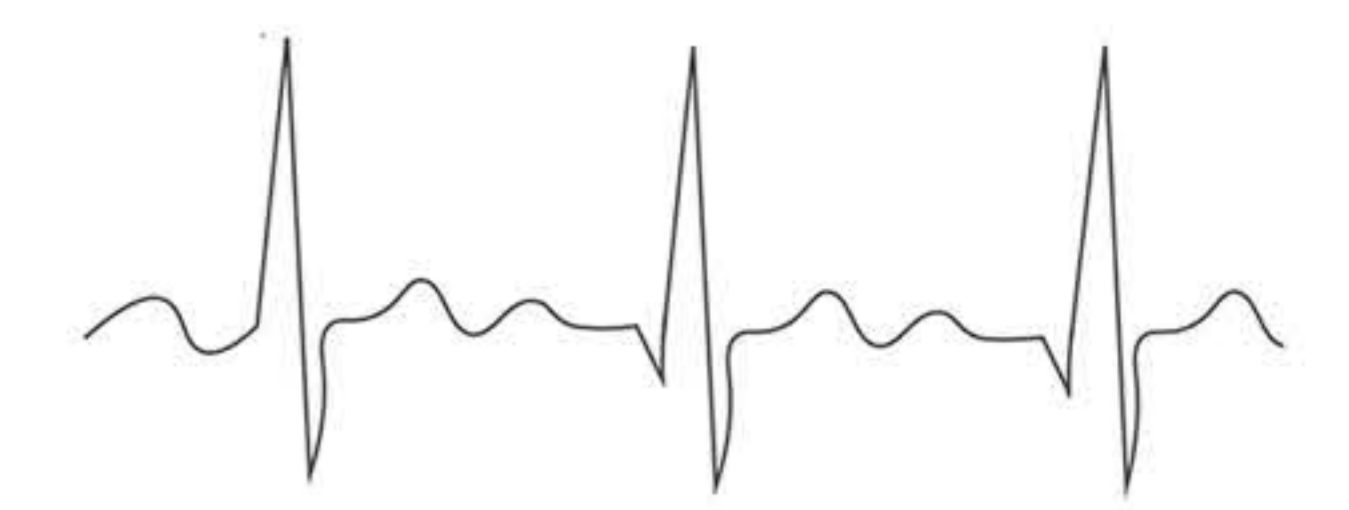
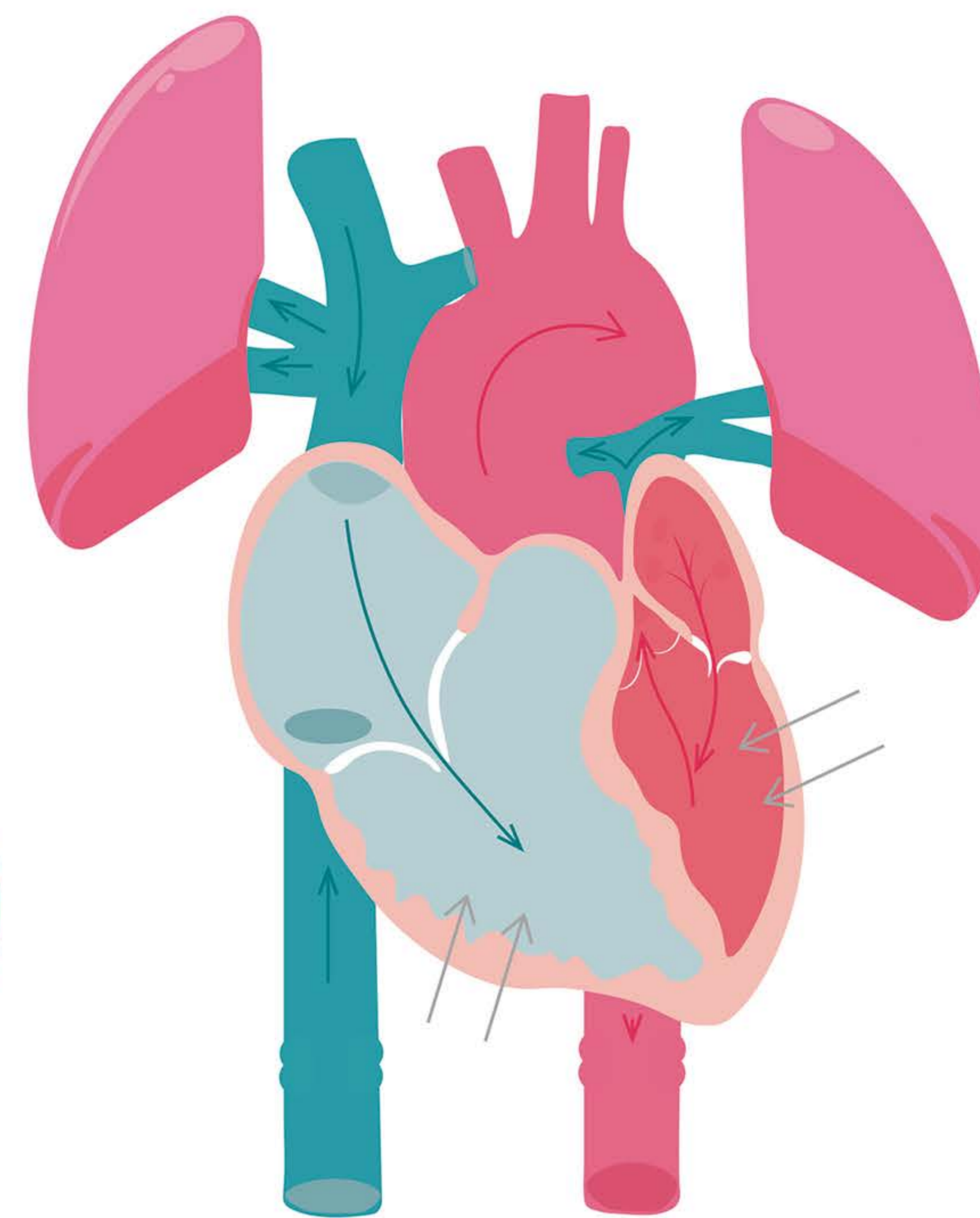


FISIOPATOLOGÍA

SHOCK

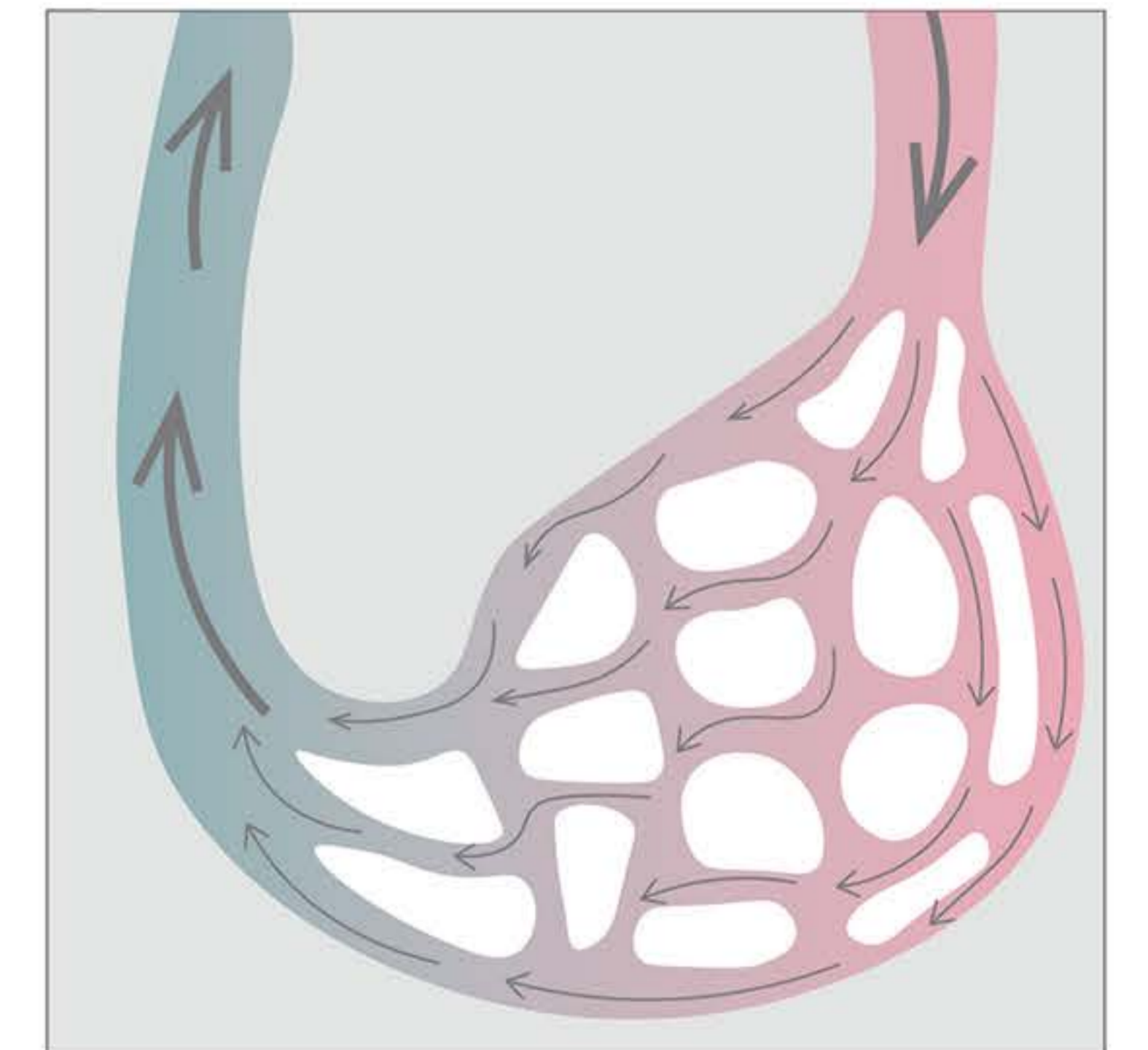
SÉPTICO

Circulación normal

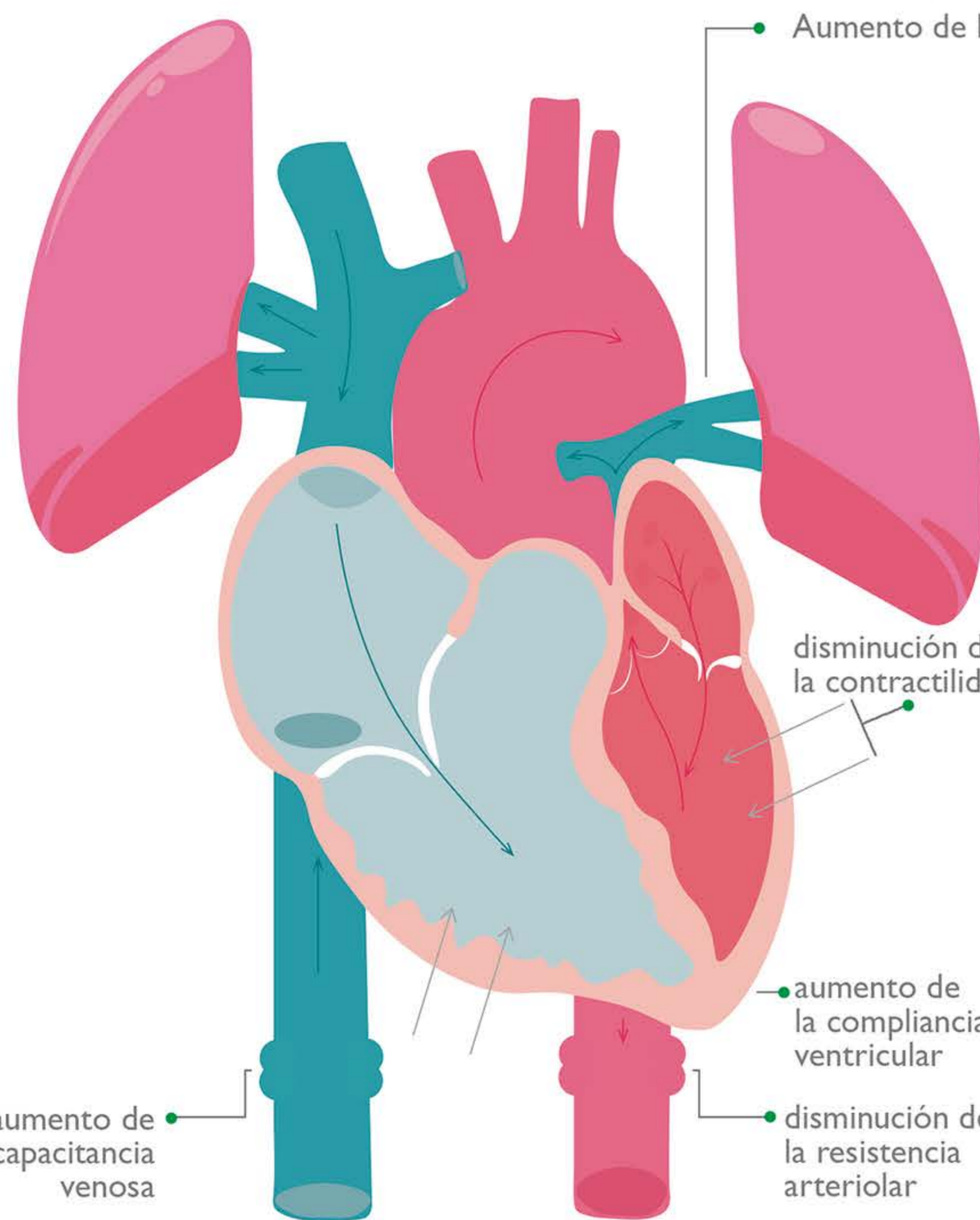


RITMO SINUSAL

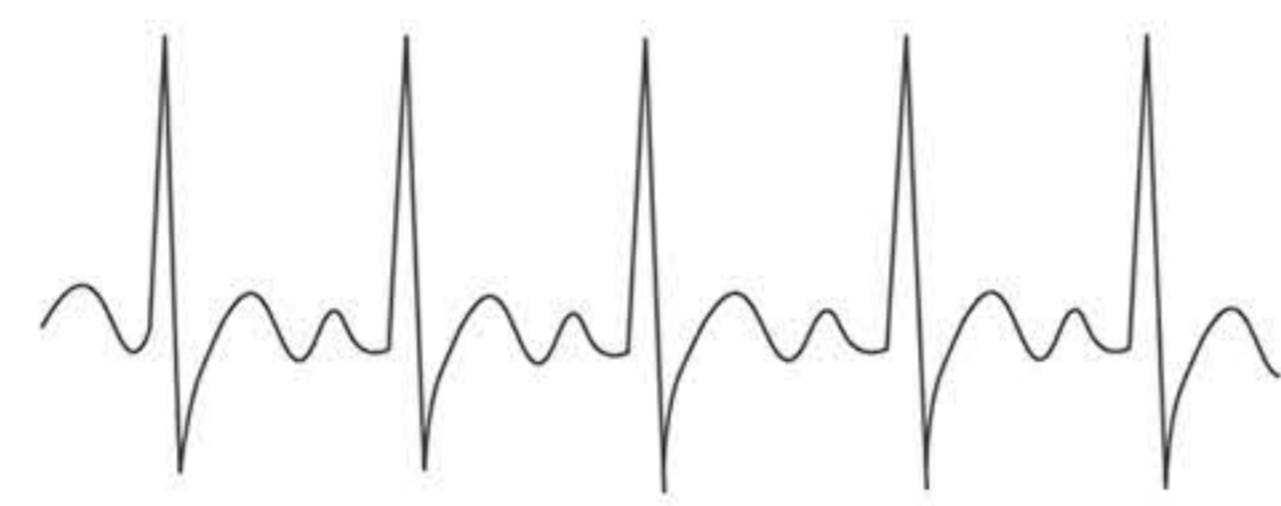
LECHO CAPILAR



Resucitación pre-fluidos

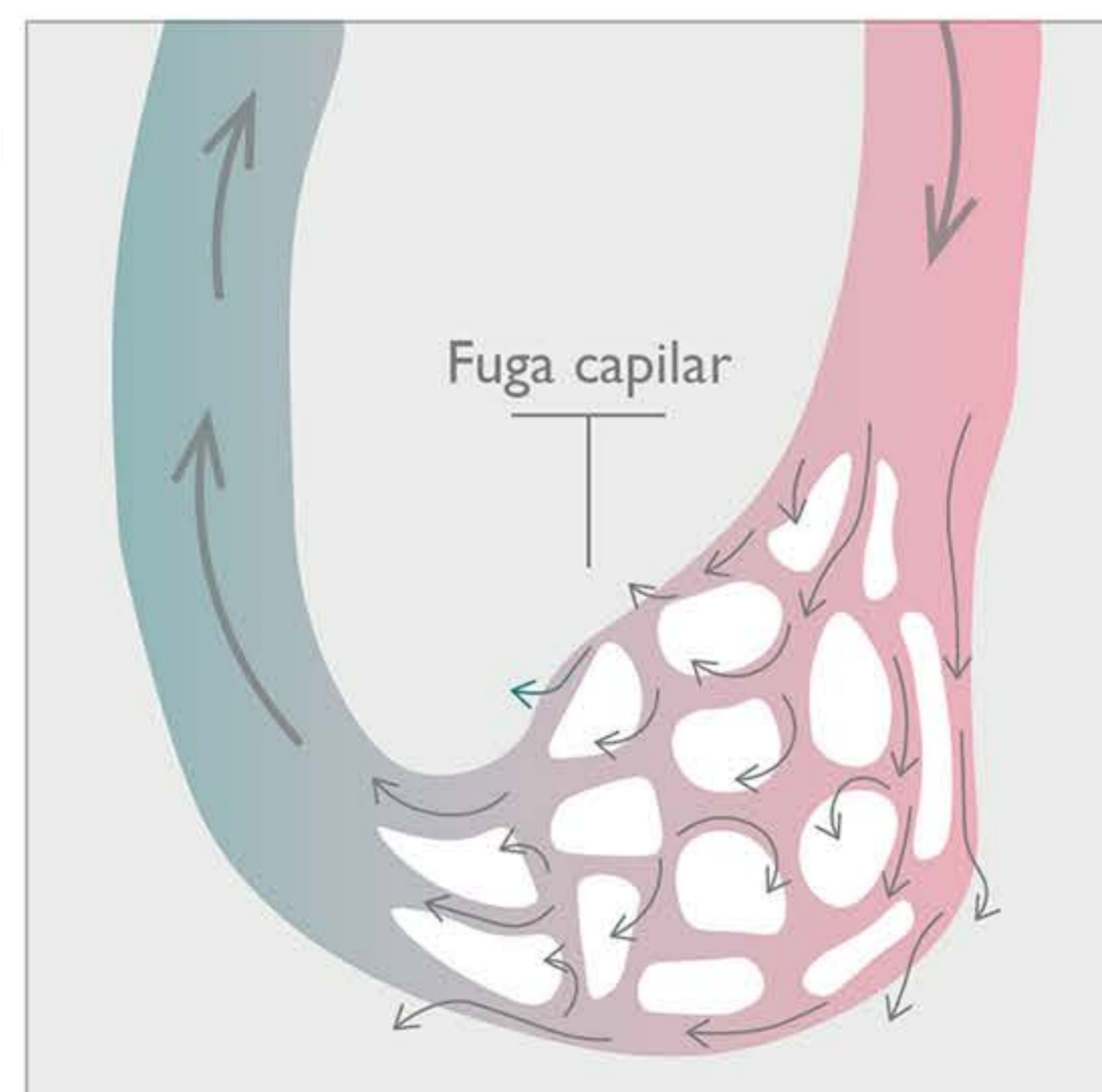


• Aumento de la resistencia vascular pulmonar



TAQUICARDIA SINUSAL

LECHO CAPILAR



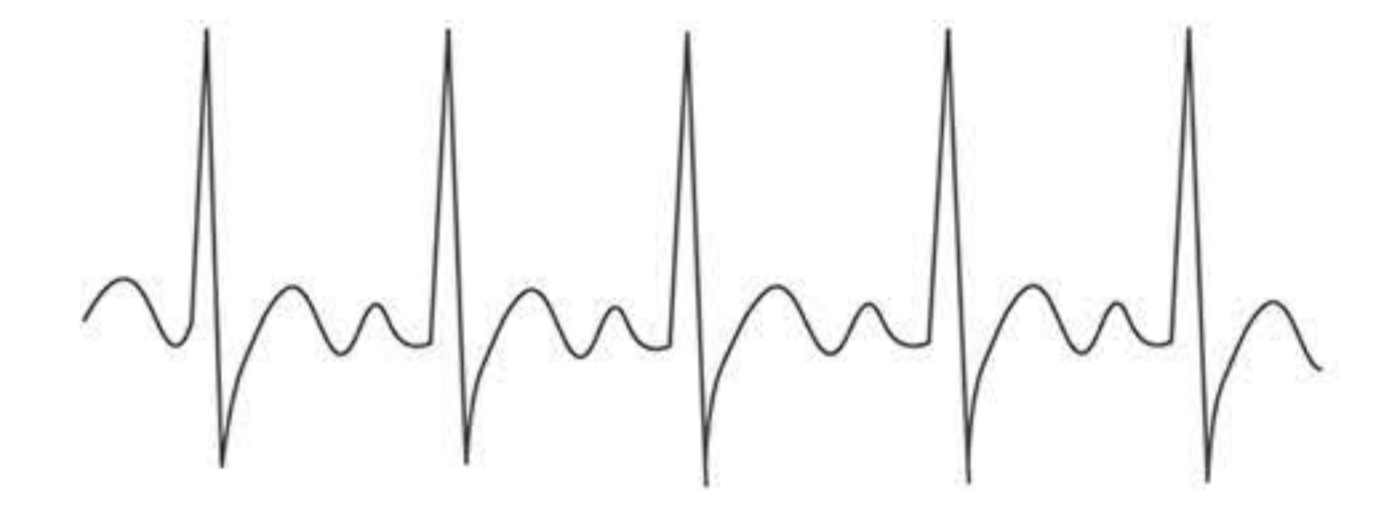
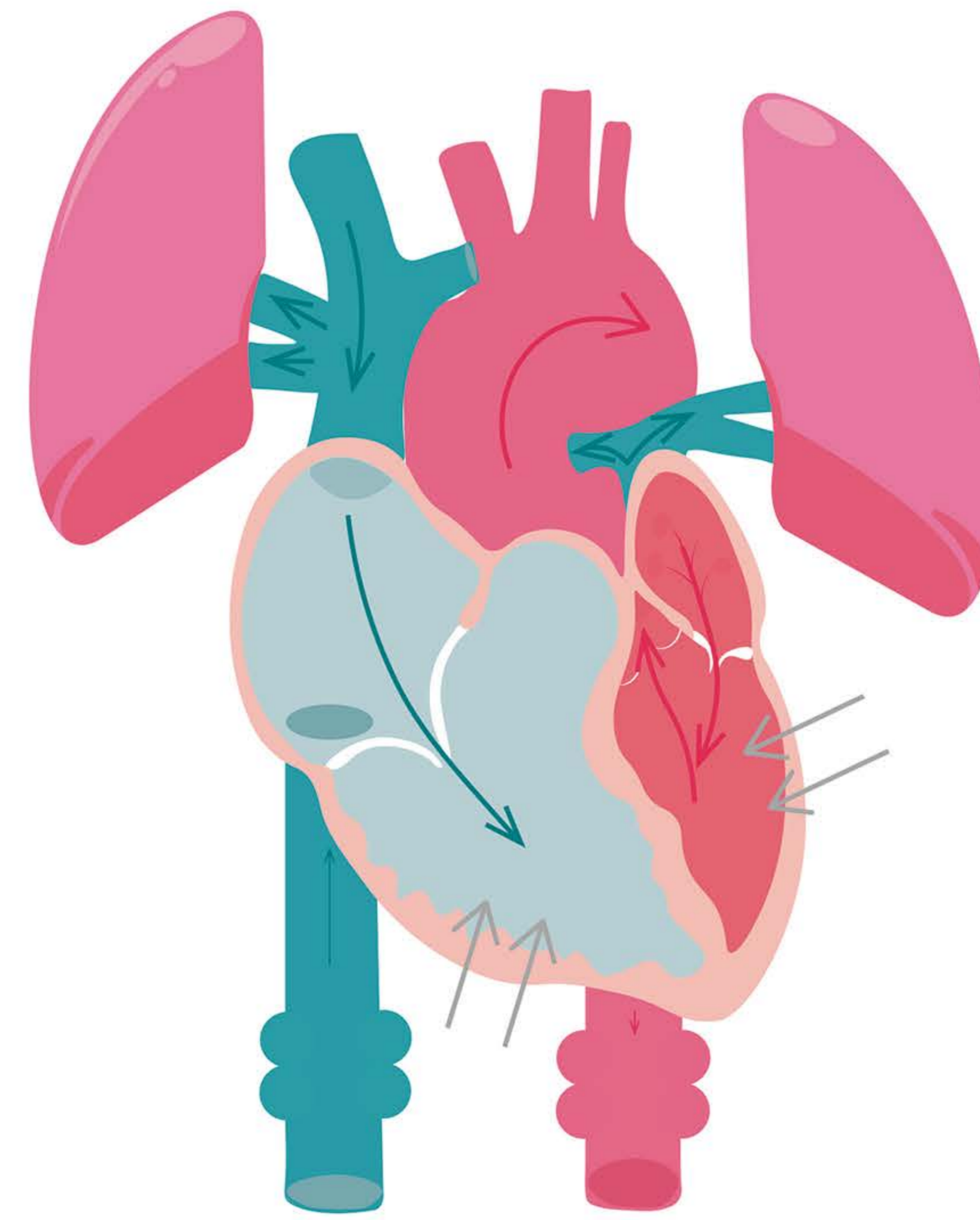
• disminución de la contractilidad

• aumento de la compliancia ventricular

• disminución de la resistencia arteriolar

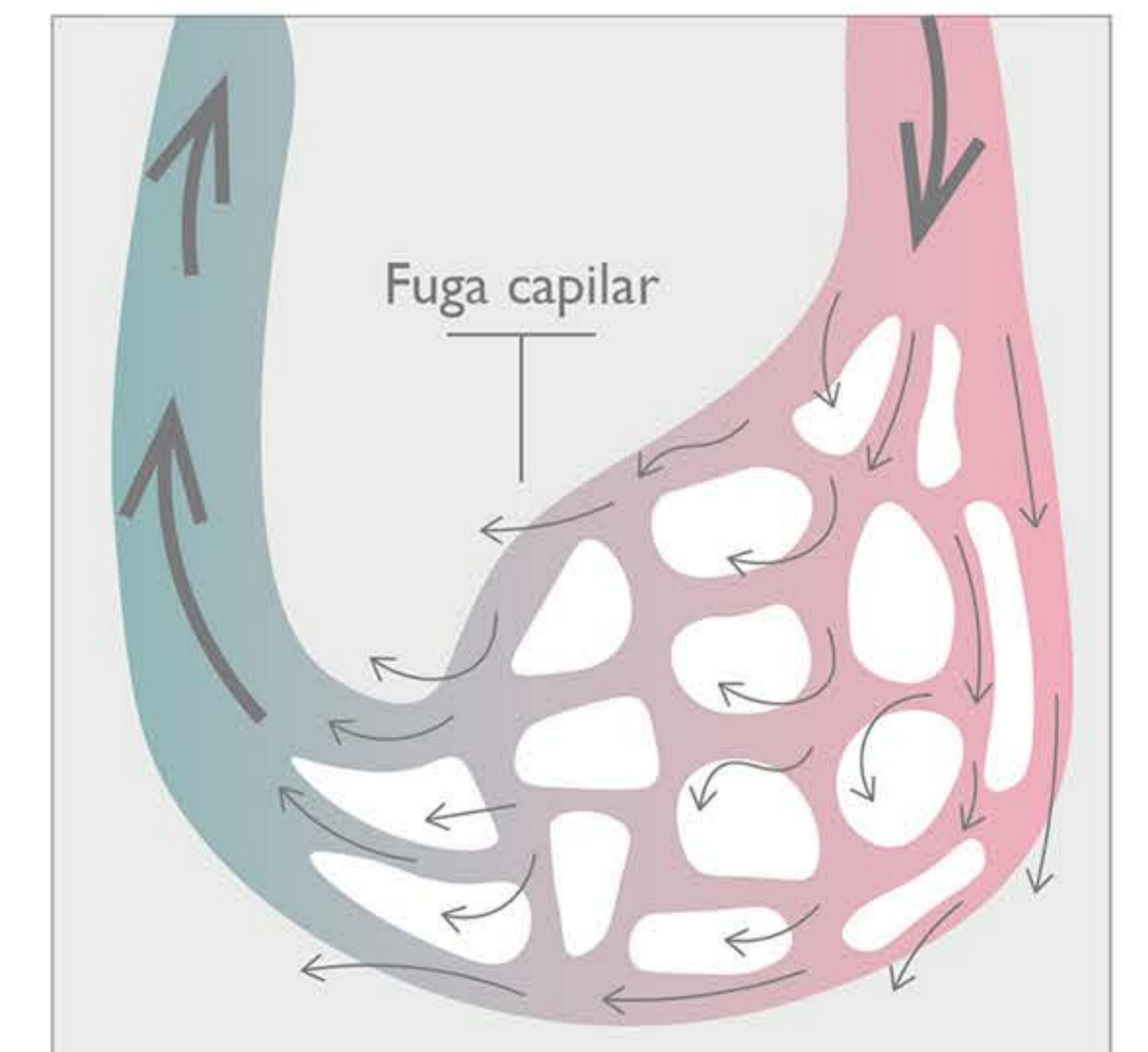
• aumento de la capacitancia venosa

Resucitación post-fluidos



TAQUICARDIA SINUSAL

LECHO CAPILAR



Value Life