

ACTIONS DURING THE GOLDEN MINUTE

- Alert status: green
- Alert status: yellow
- Alert status: red



CHECK THE EQUIPMENT AND THE ORGANISATION OF THE TEAM

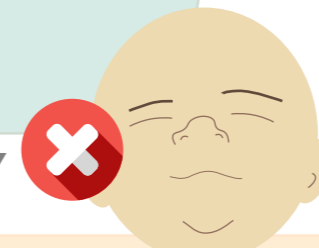
CHILDBIRTH

1 INITIAL ASSESSMENT

- Gestational age
- Crying and breathing
- Amniotic fluid
- Muscle tone



CRIES



DO NOT CRY

Perform delayed cord clamping

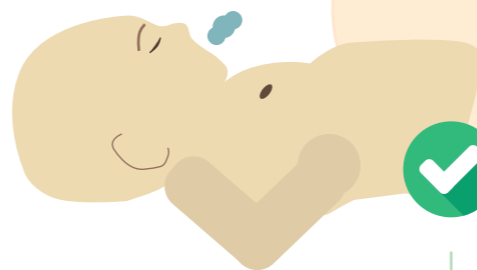
- Provide and maintain warmth
- Completely dry the newborn
- Ensure opening of airways
- Continue assessment



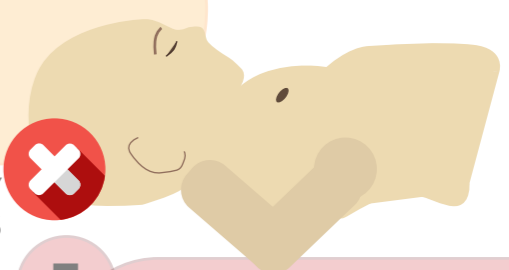
PROMOTING THE KANGAROO METHOD

2 INITIAL STABILISATION

- Maintain the NB's temperature
- Clear airway and suction secretions
- Dry the NB to avoid hypothermia
- Tactile stimulation
- Reposition the newborn



NO RESPIRATORY DISTRESS



RESPIRATORY DISTRESS

3 VENTILATION

- Monitor SpO2
- Consider ECG

POST-REANIMATION CARE

Ensure ventilation manoeuvres considering intubation

Continue ventilation, measure heart rate and start advanced care

