



My Guide to Navigating Cancer For children and teens



Value Life

Welcome to the paediatric ward!

Our entire team is here to take care of you, listen to you and support you throughout your treatment.

You probably received this little guide because you now have or will have an implantable port. This guide, created by Vygon, will help you understand what an implantable port is and how it will be used.

You can read it on your own or with your parents. It's here to reassure you!

My surname:

My name:



MEDICAL INFO

My hospital:

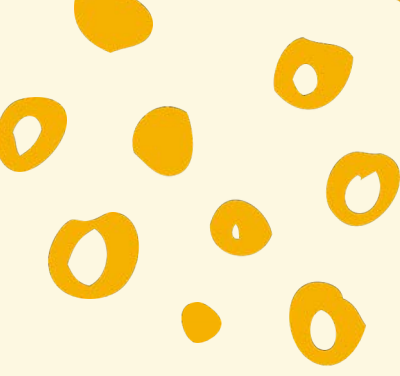
My service:

My doctor:

Phone number:

MY PARENTS

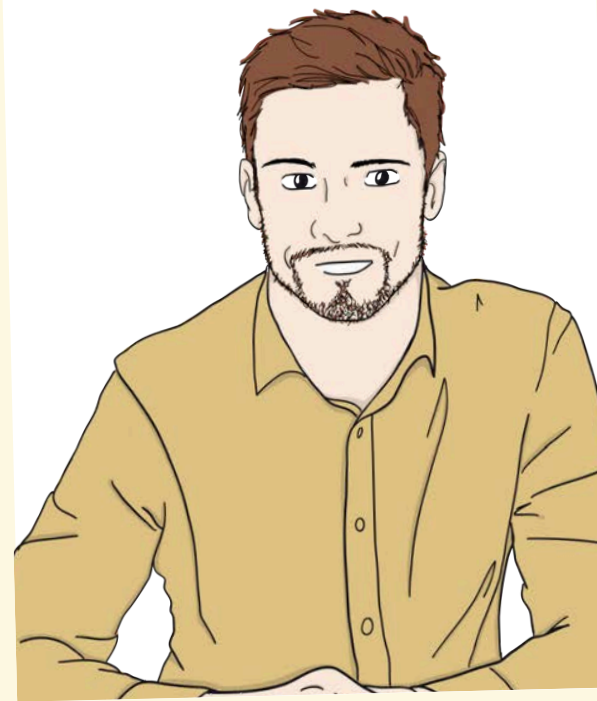
Our characters:



Sloane



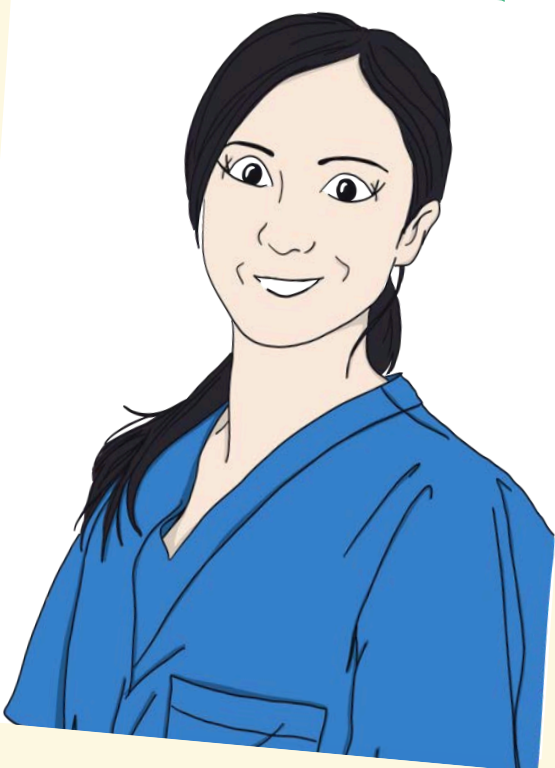
Sloane's mom



Sloane's Dad



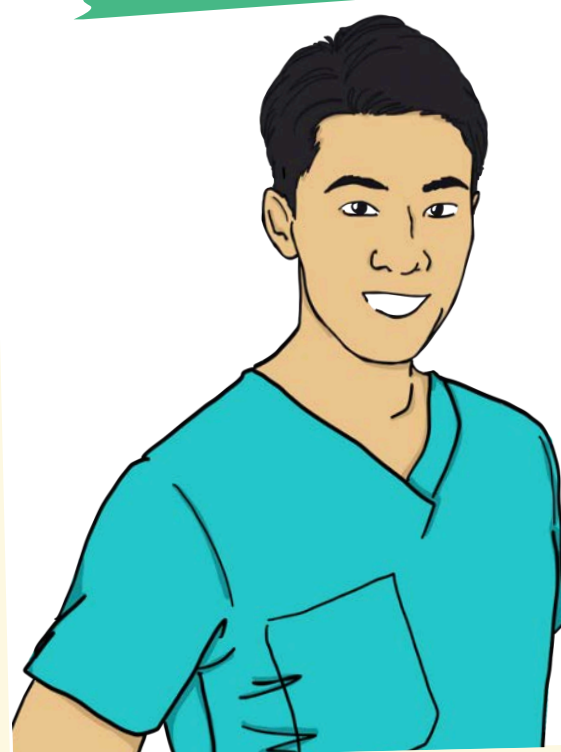
Dr Agate Hope
Oncologist



Milla
Nurse



Oncology
Nurse



Dr Ina
Anesthesiologist

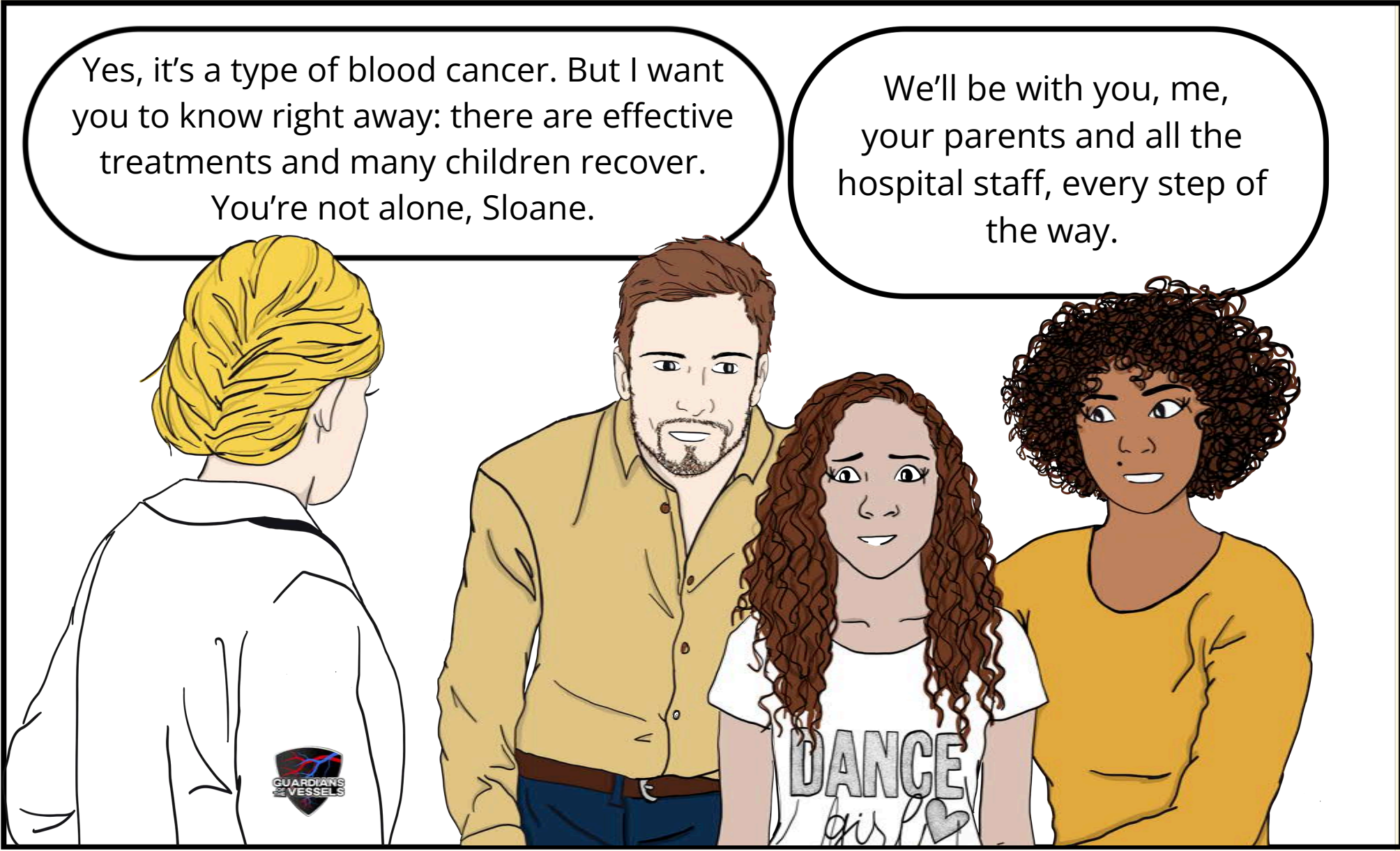
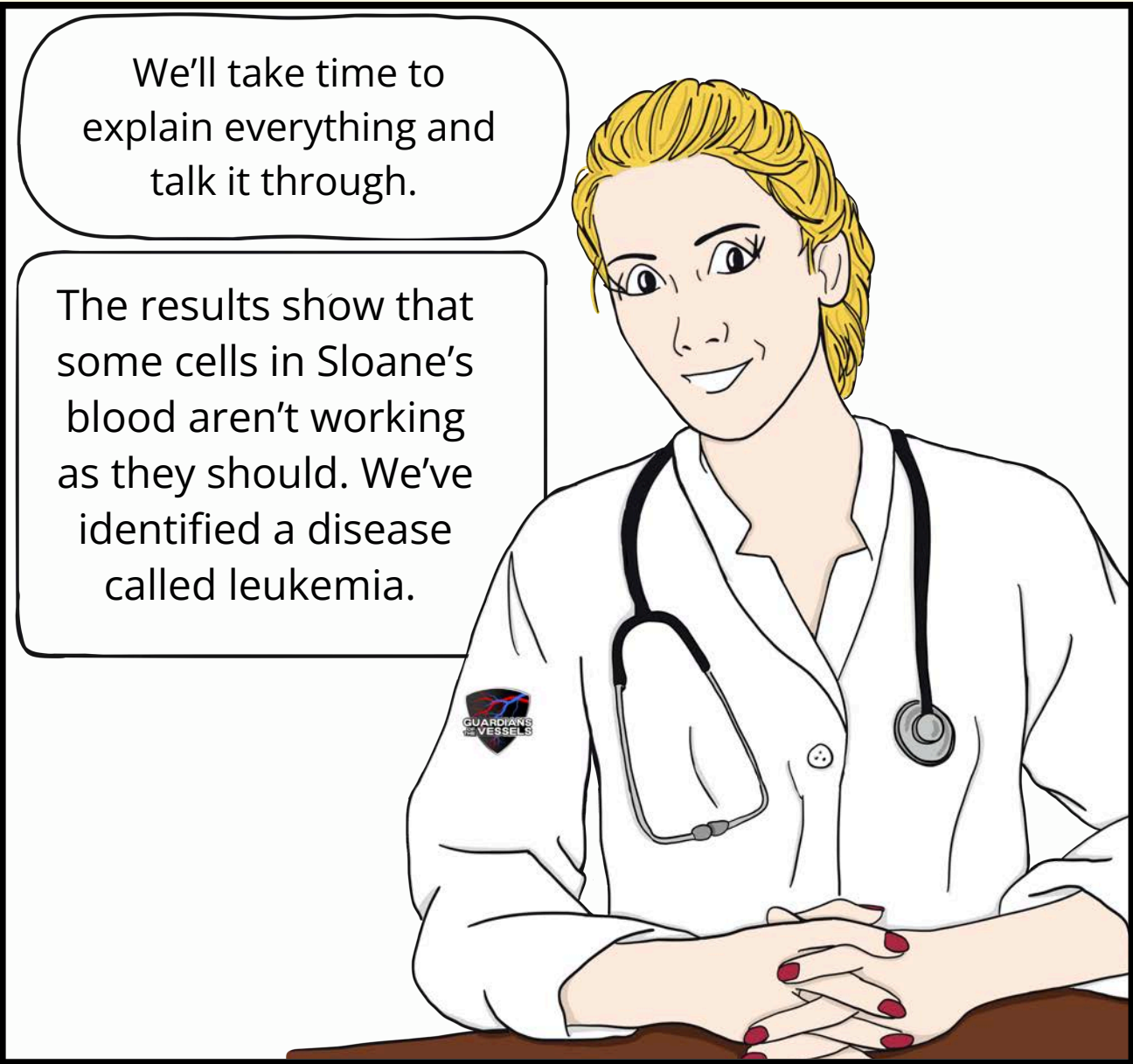


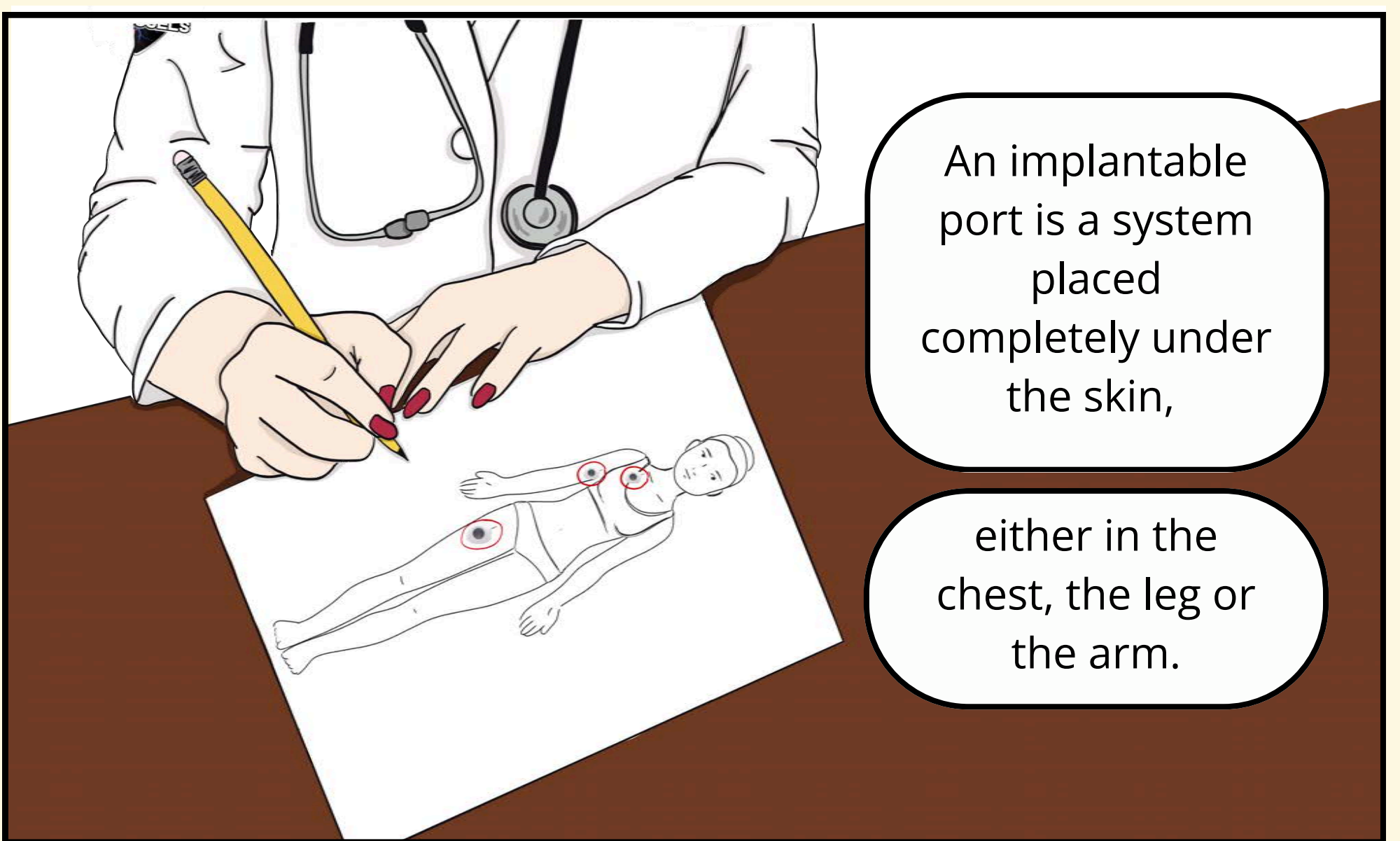
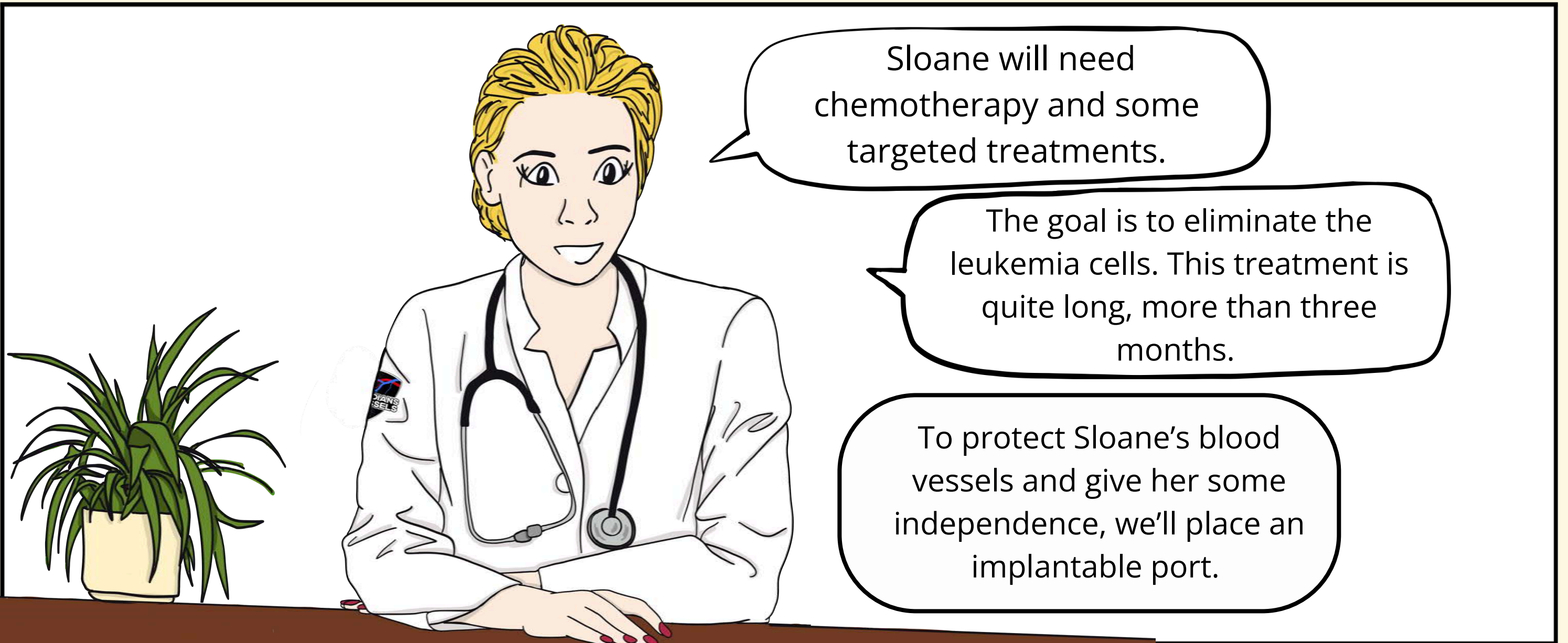
Sloane's
cousin

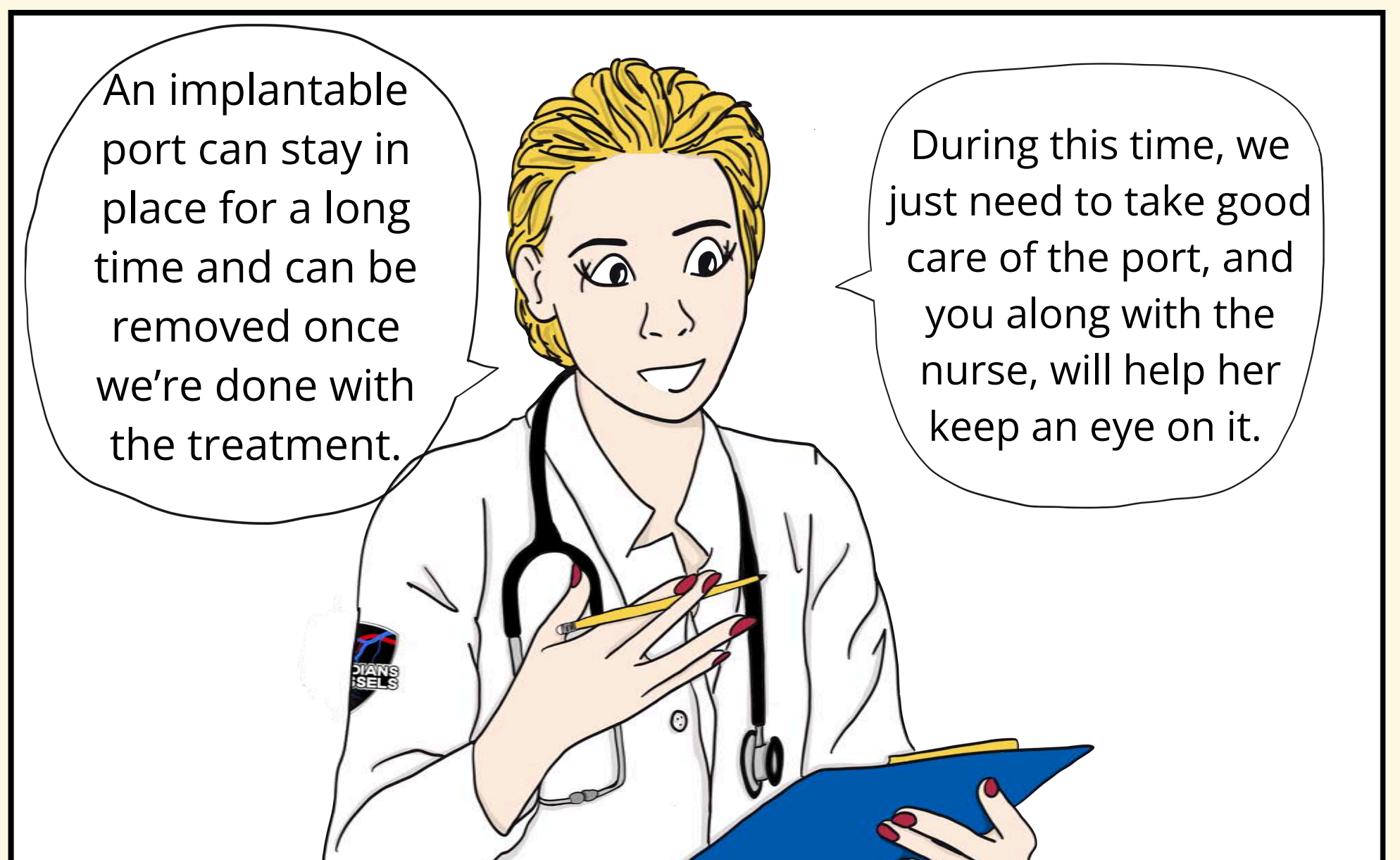
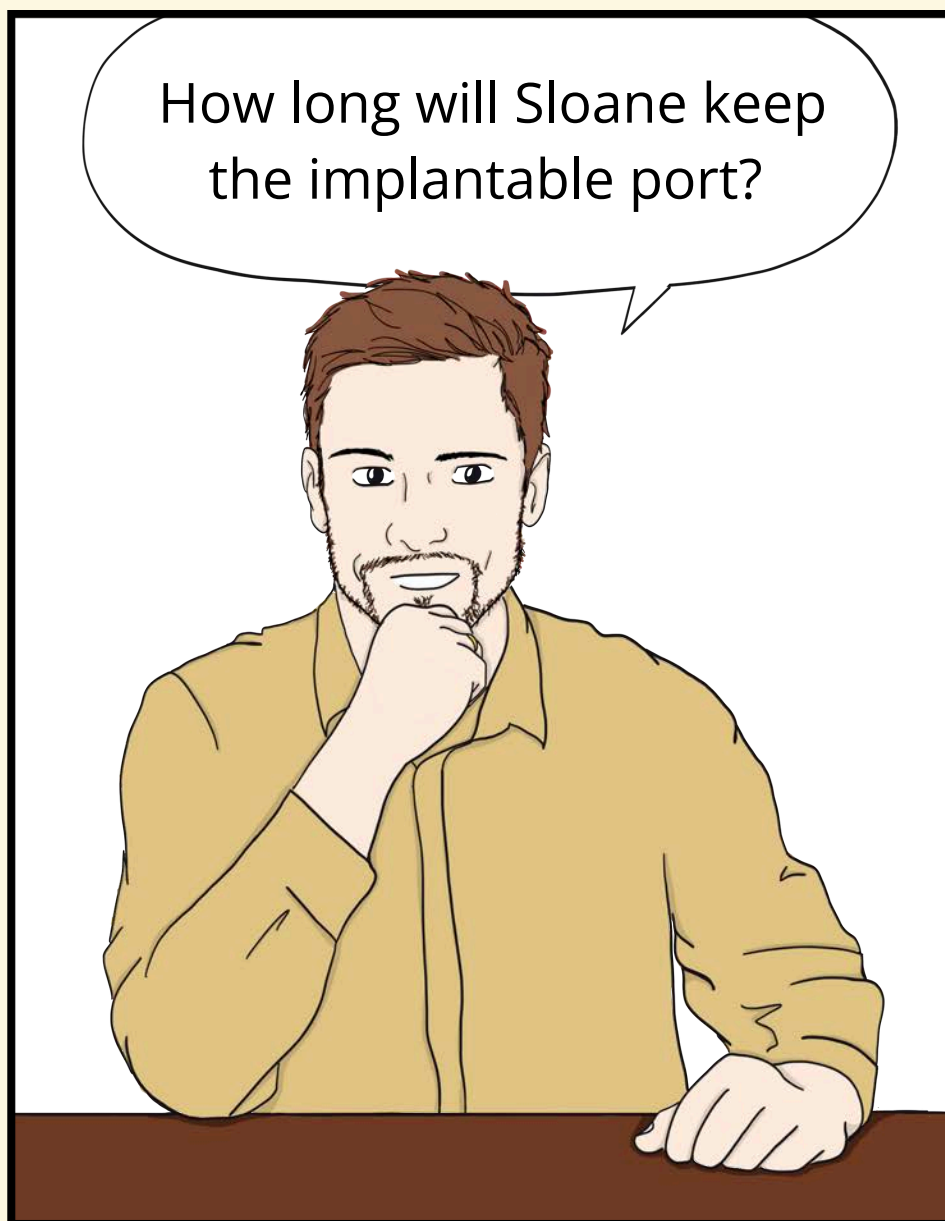


Guardian of the Vessels is a Vygon initiative aimed at creating a community of healthcare professionals who share a common goal: implementing best practices to improve patient care.

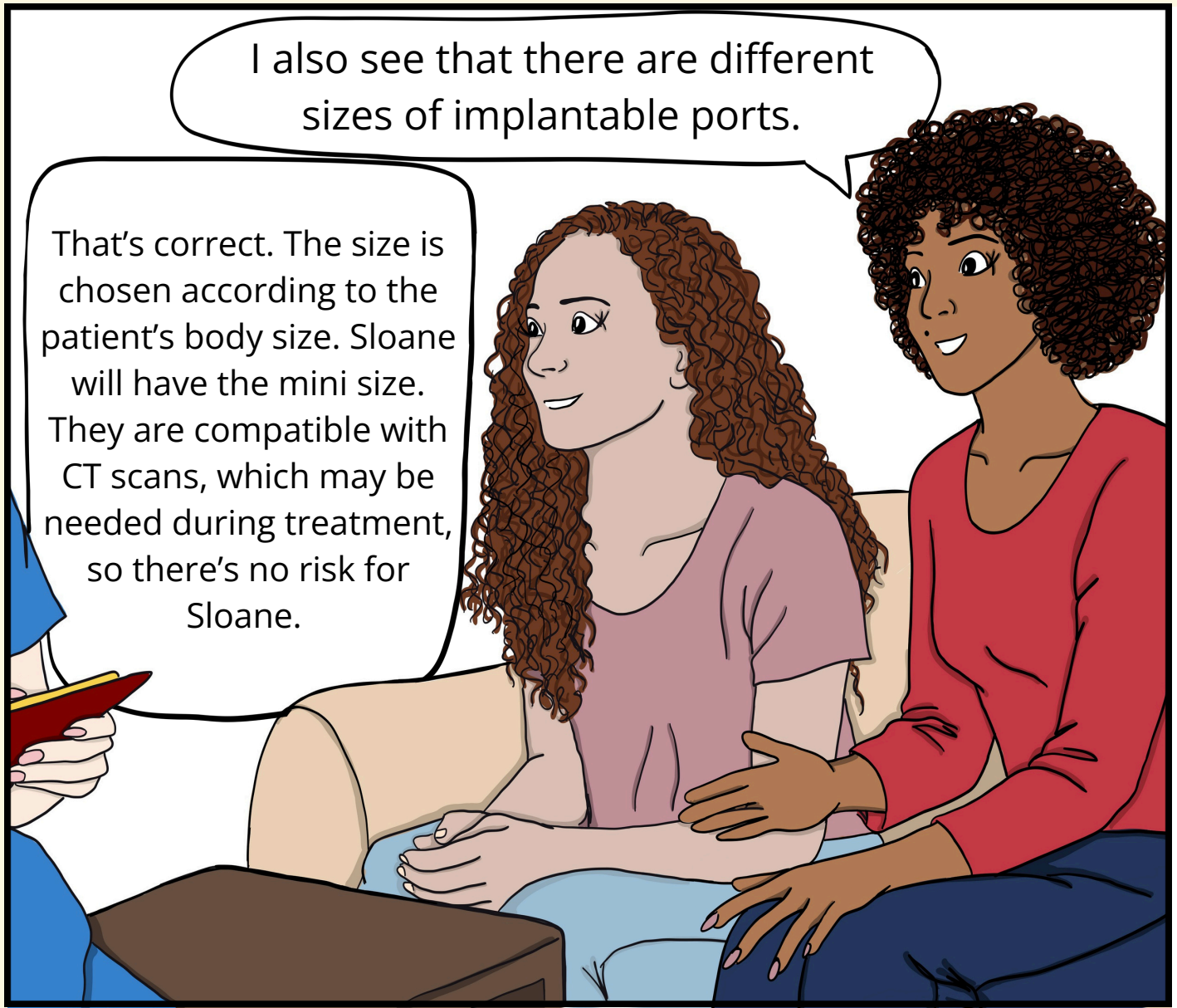
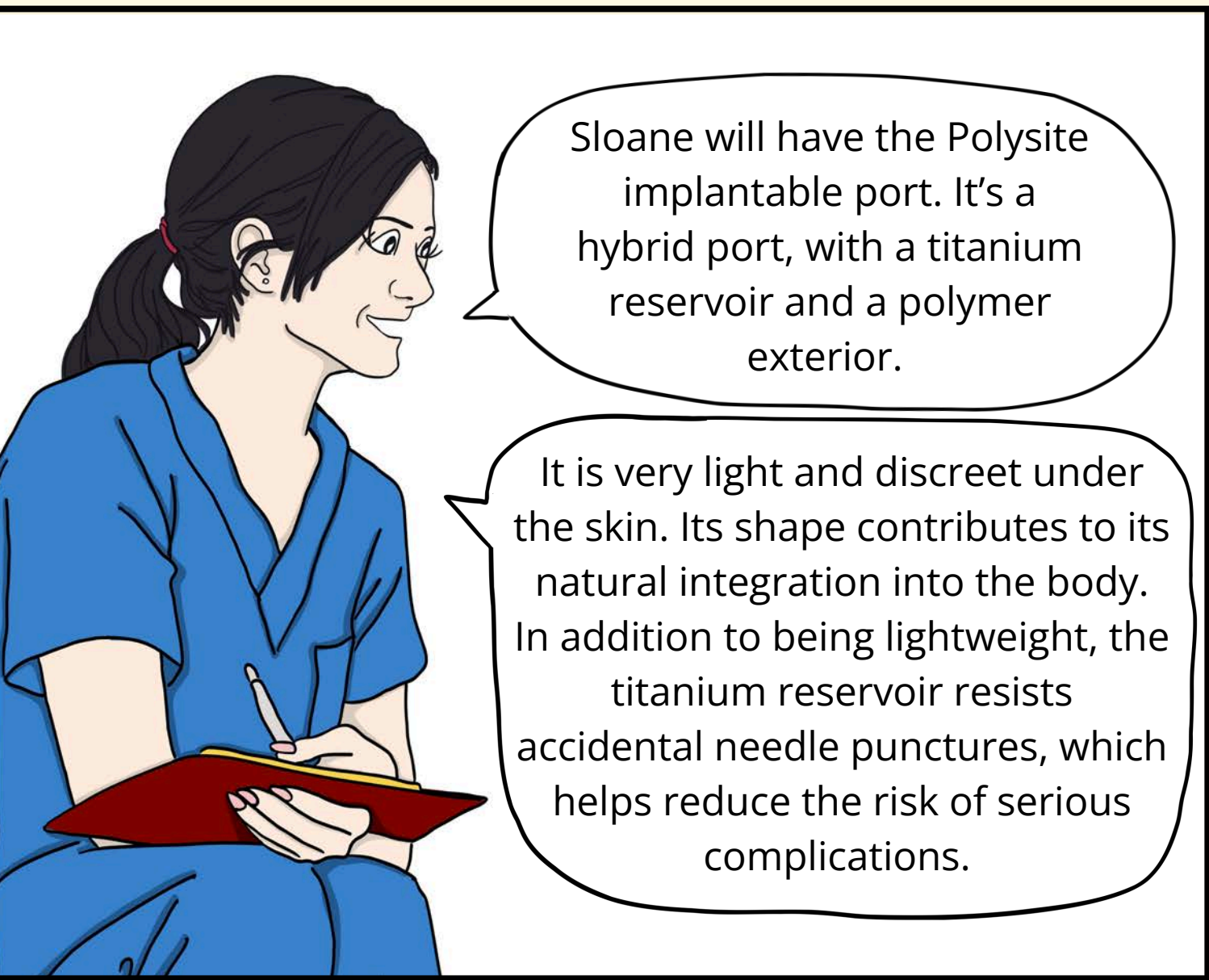
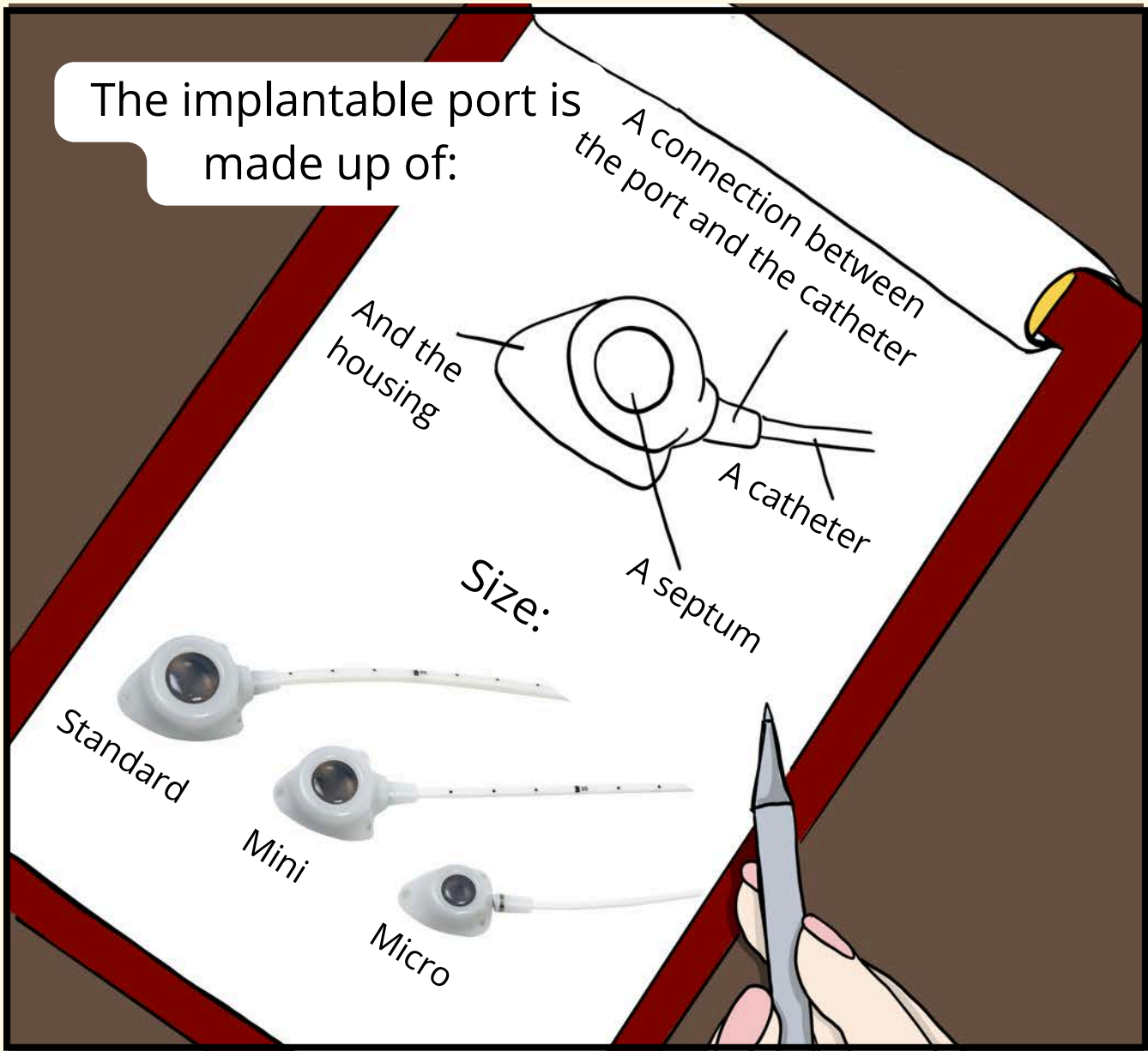
Chapter 1: Dr Hope brings hope!

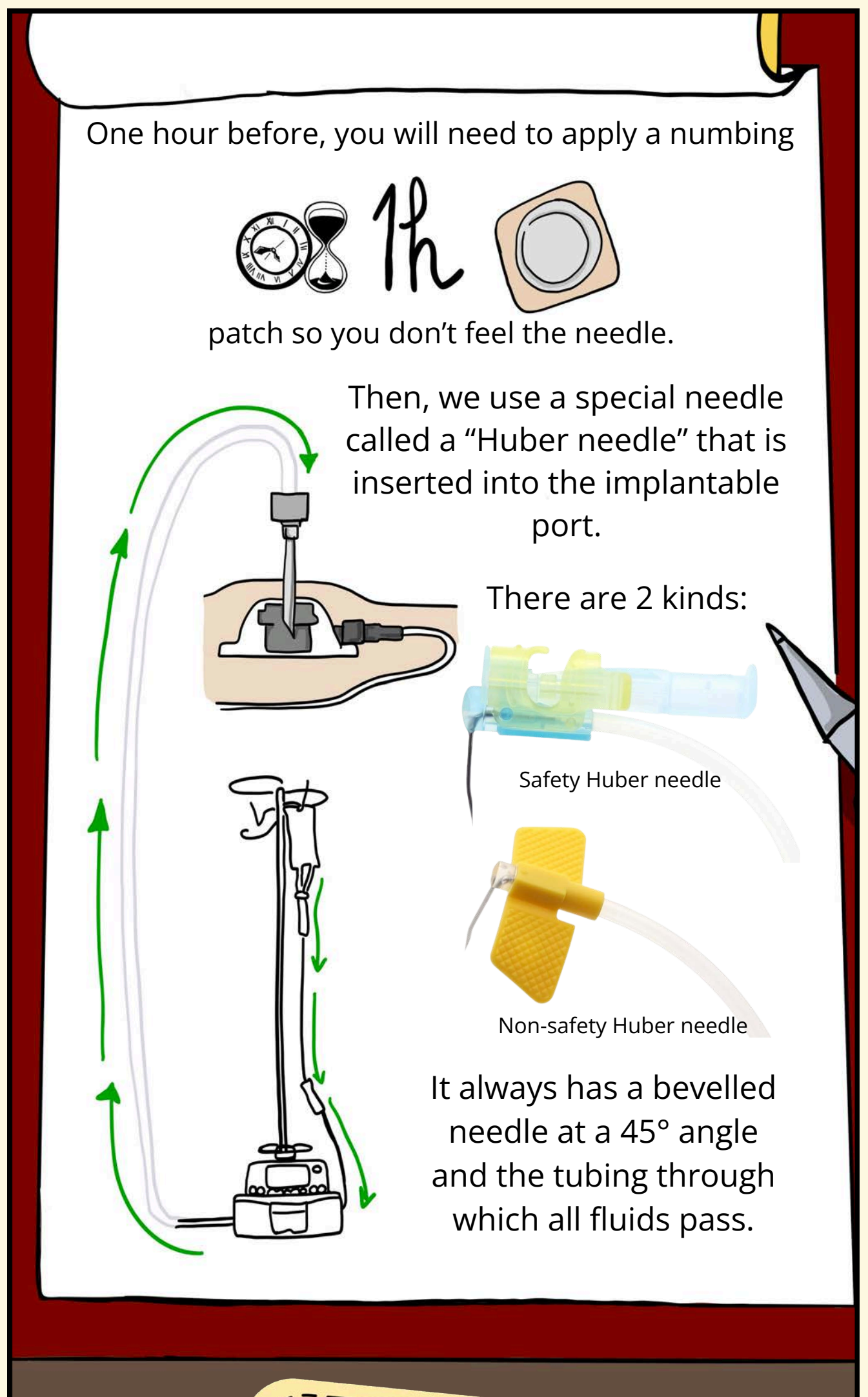
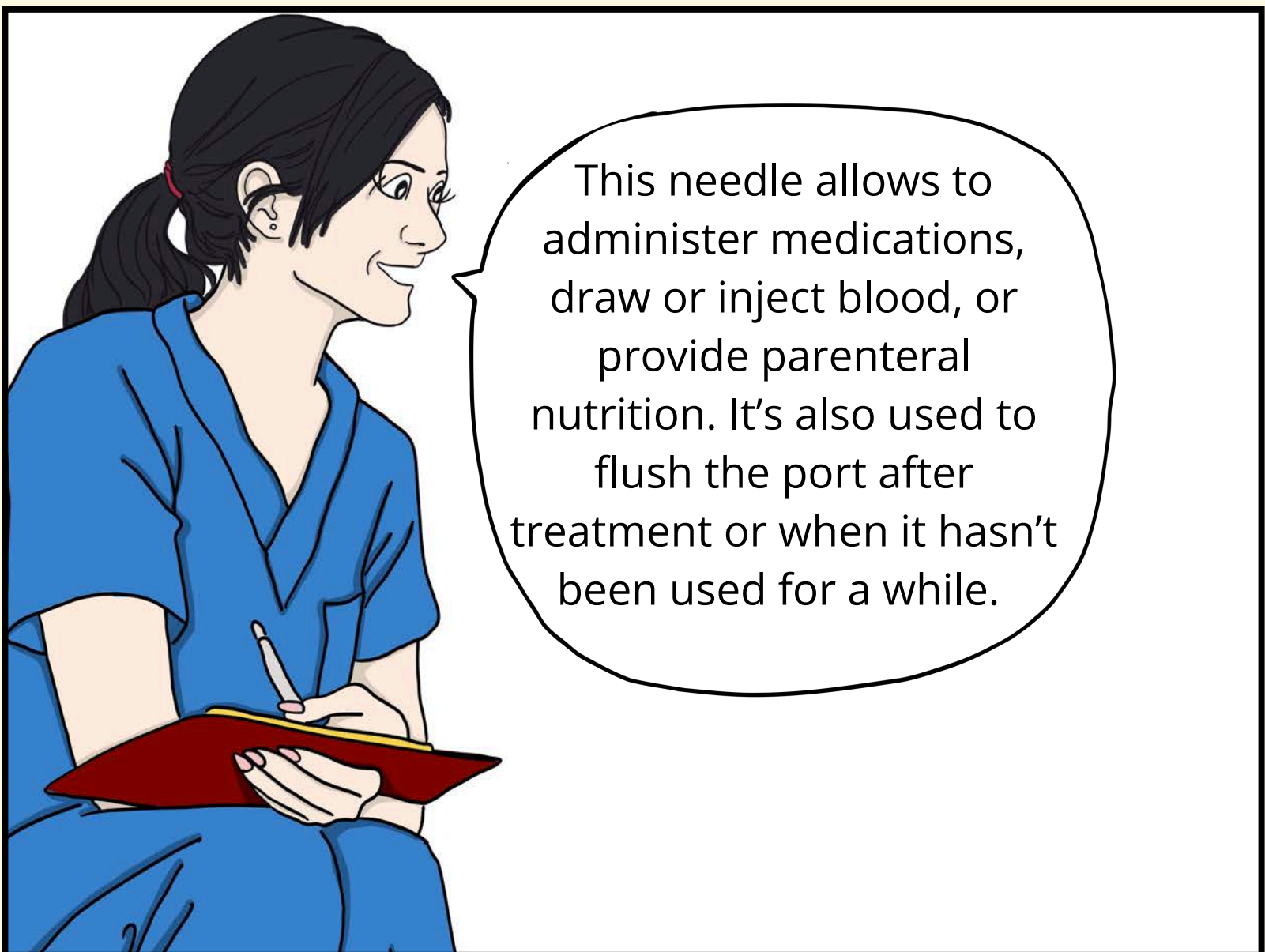
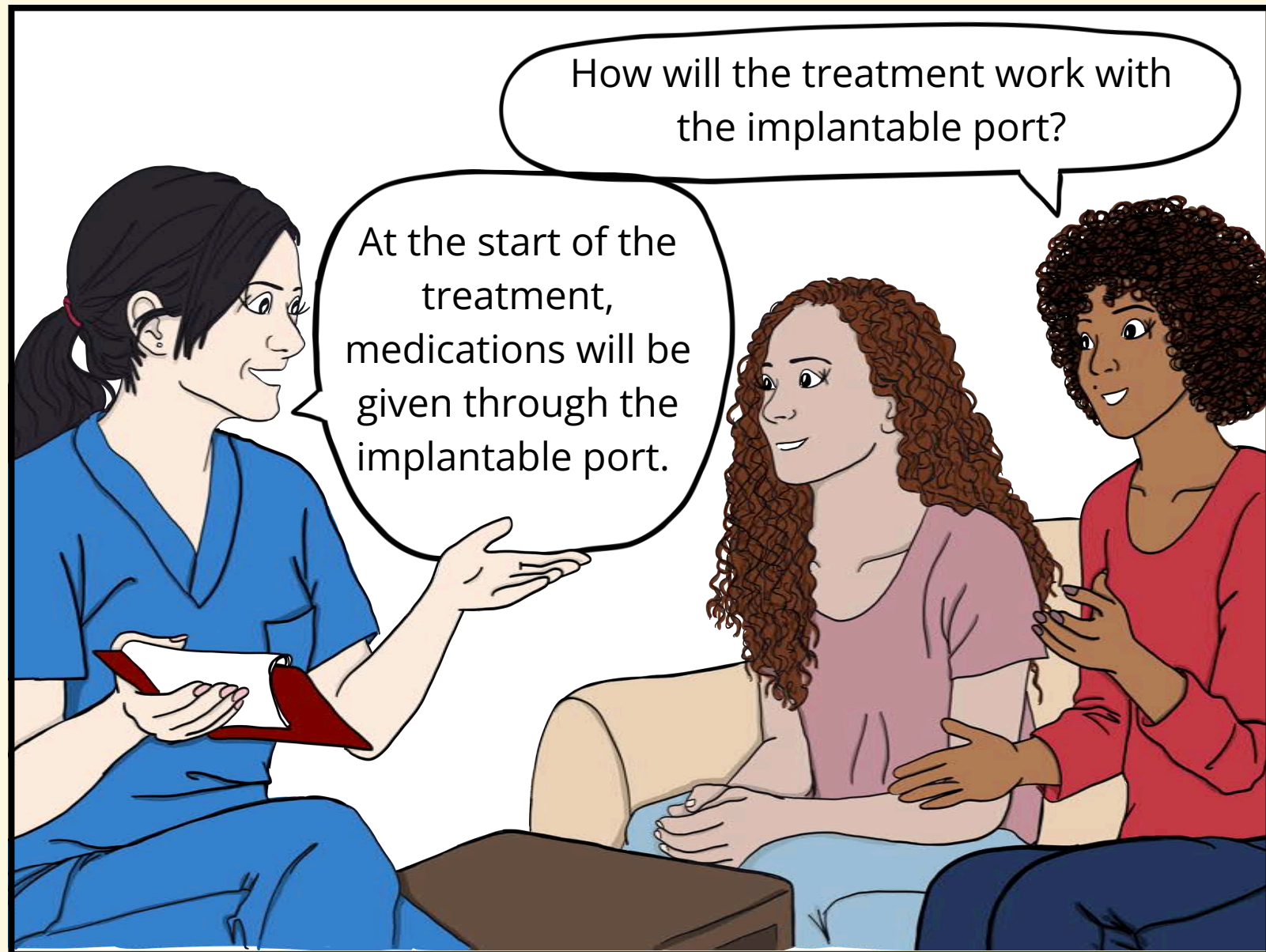




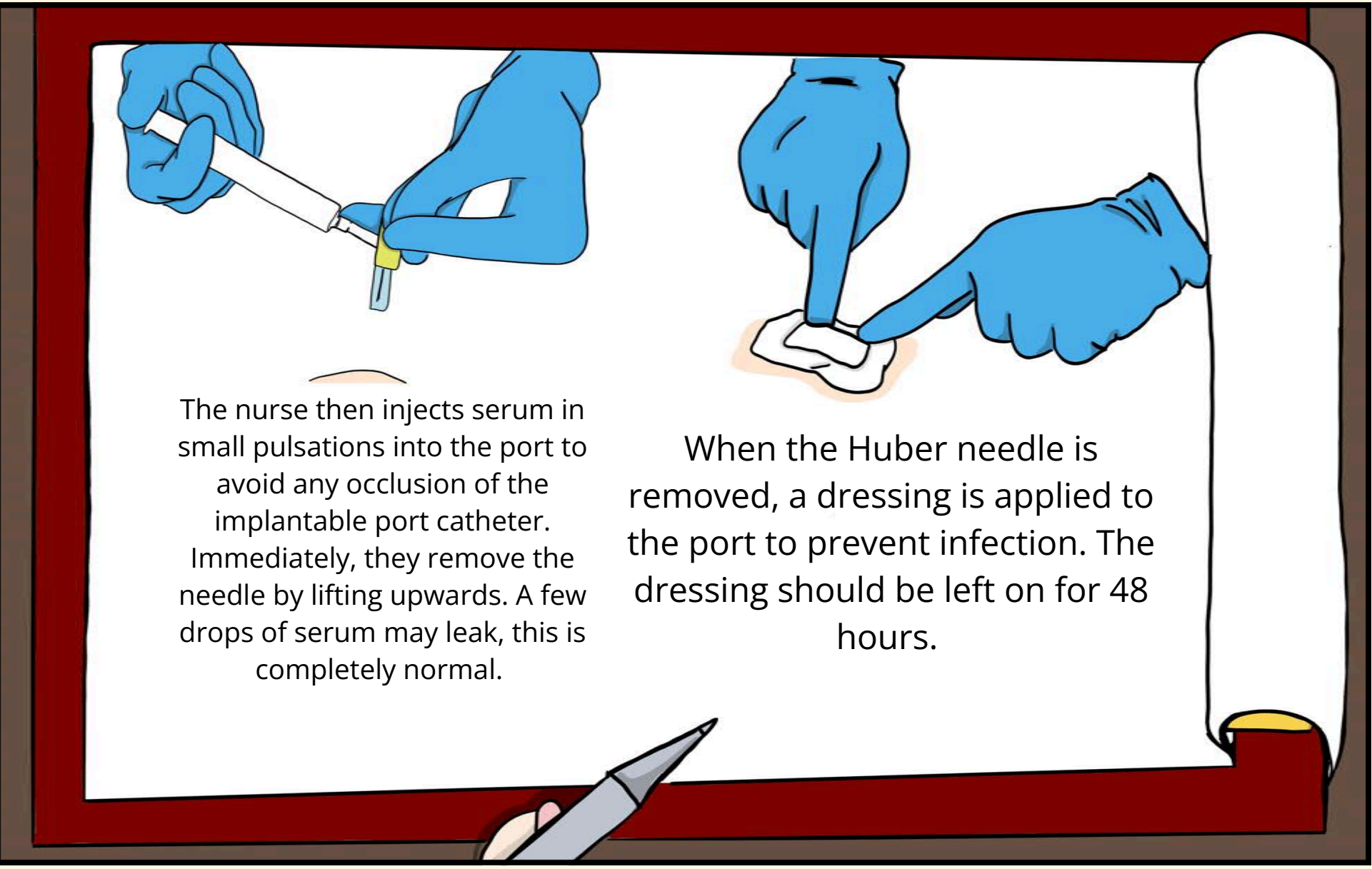
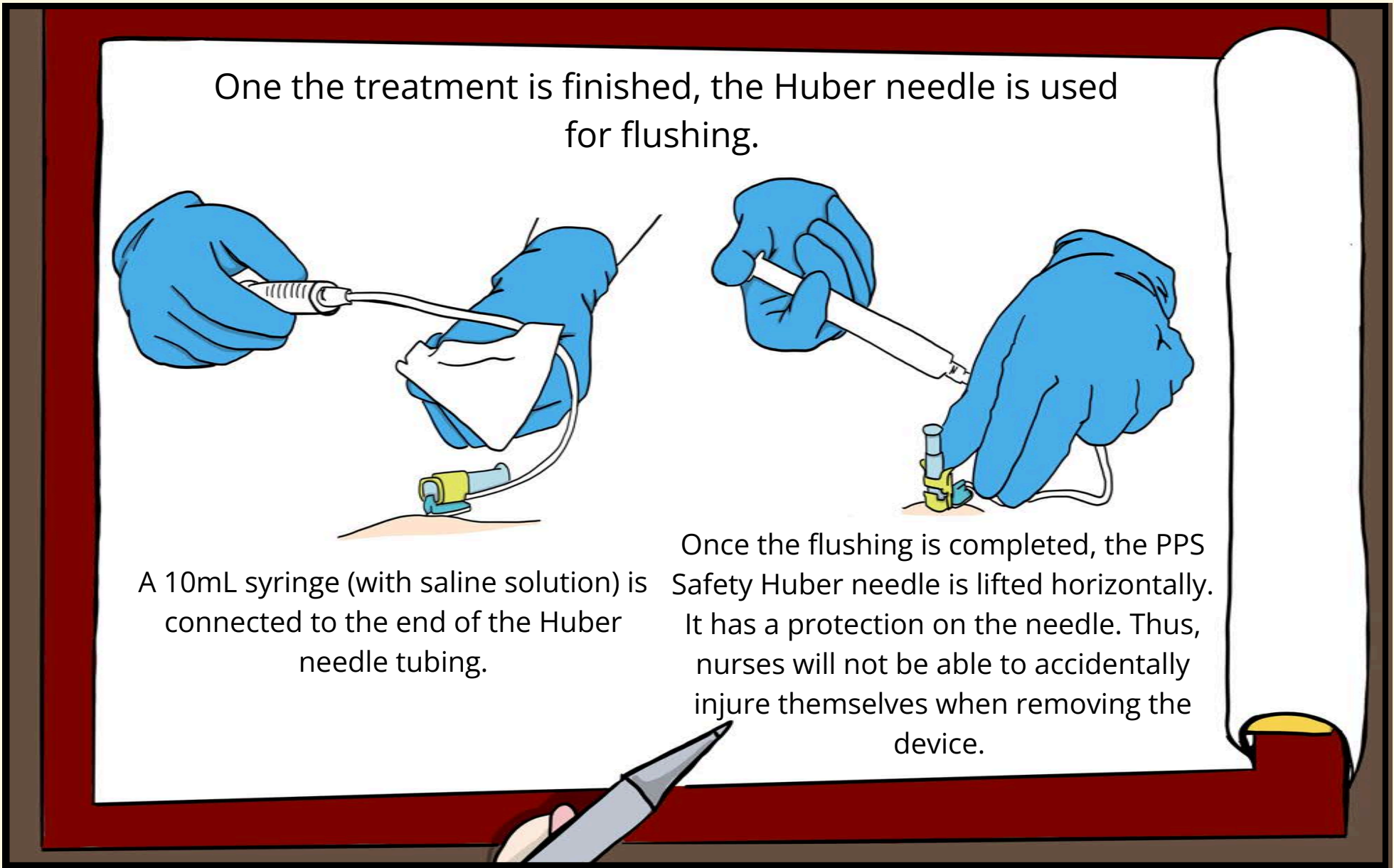
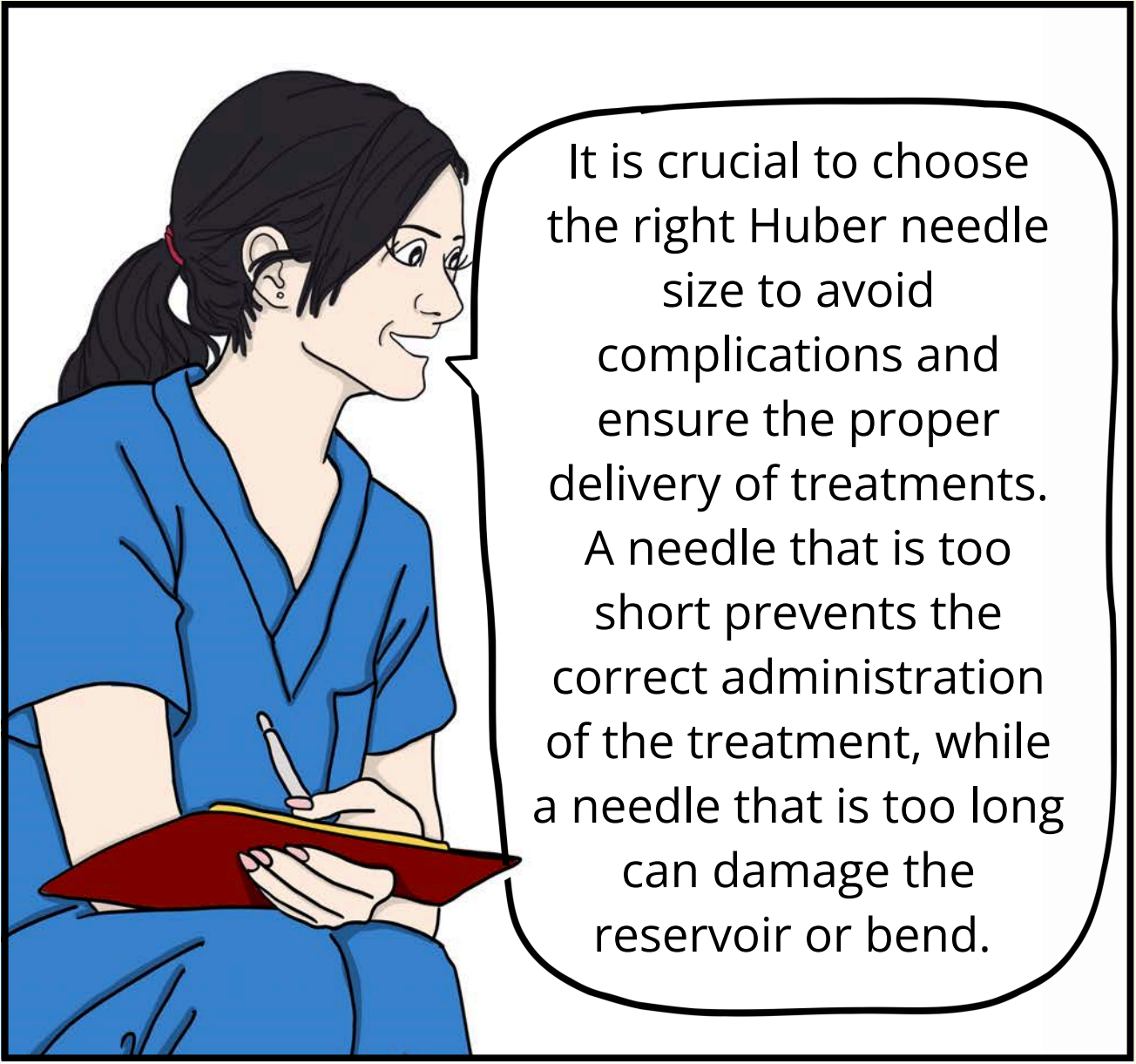
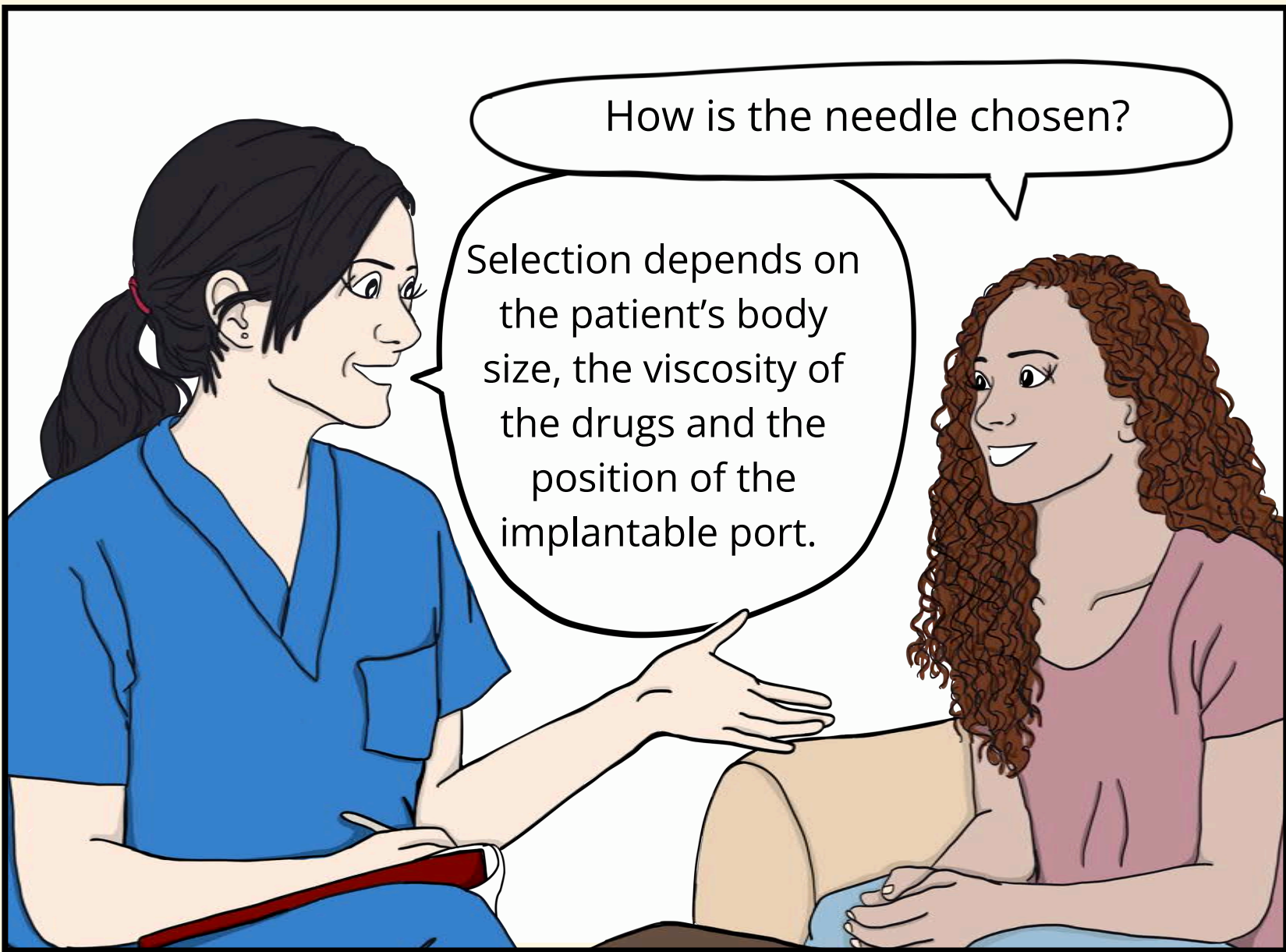


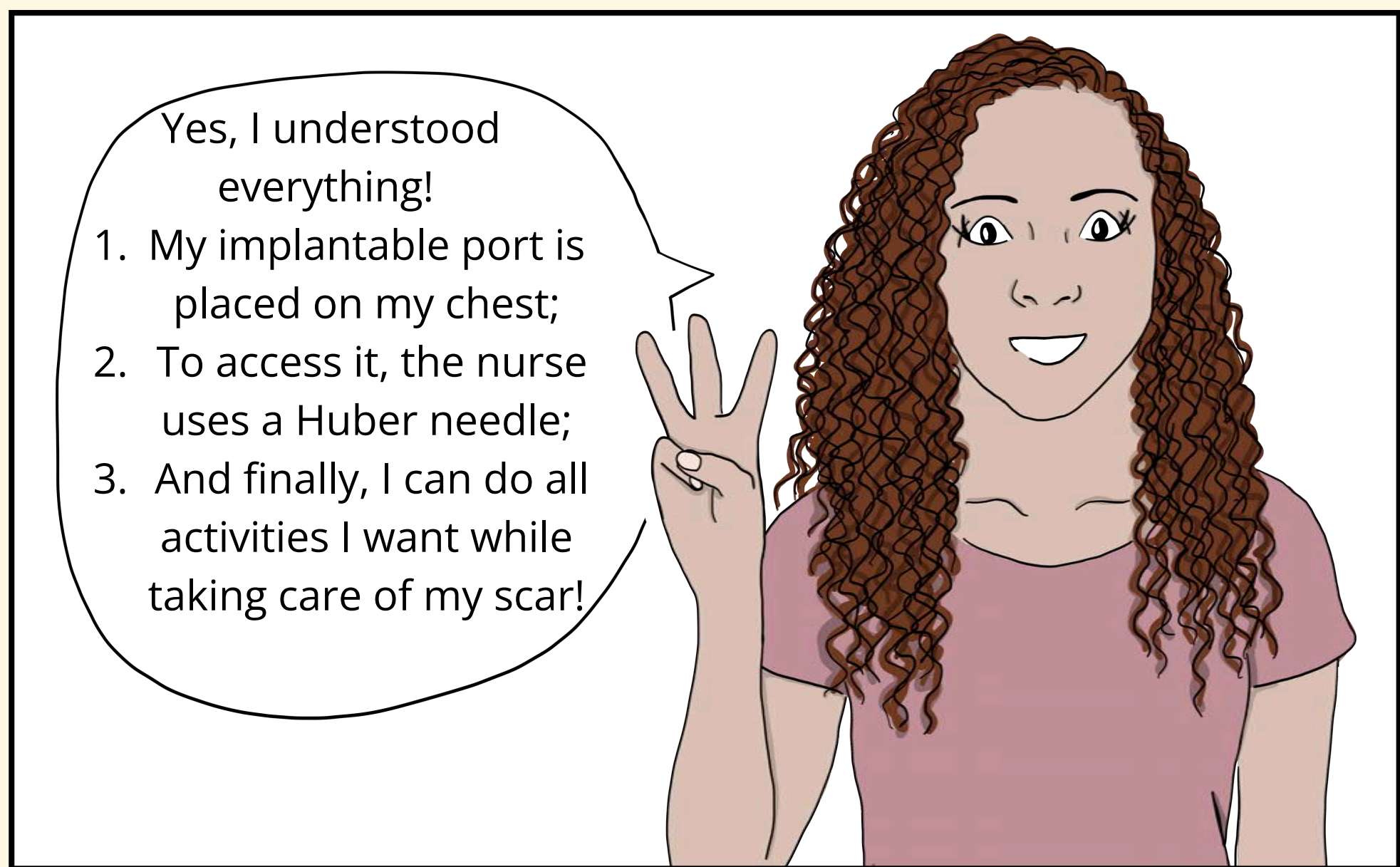
Chapter 2: Milla, the guardian angel



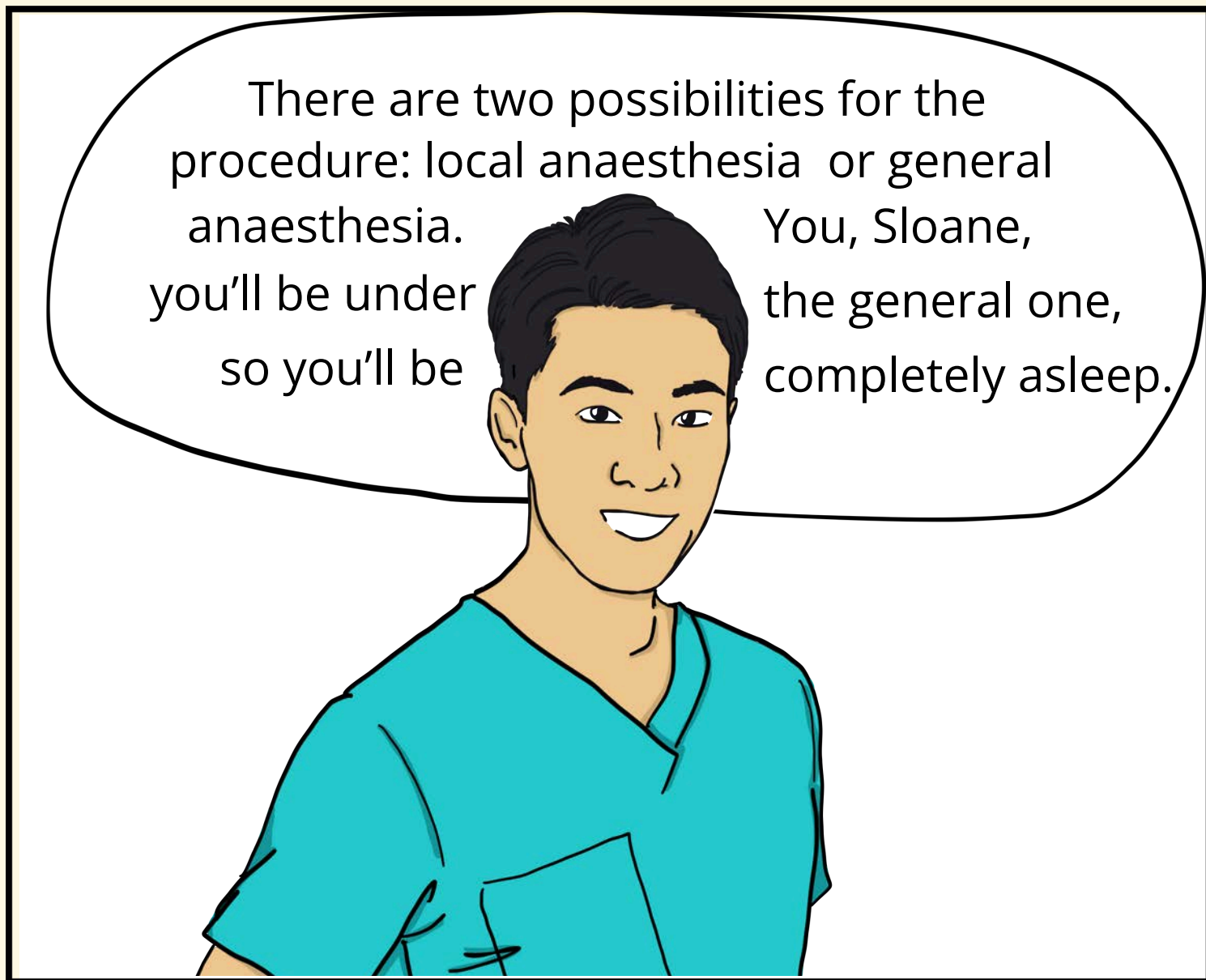
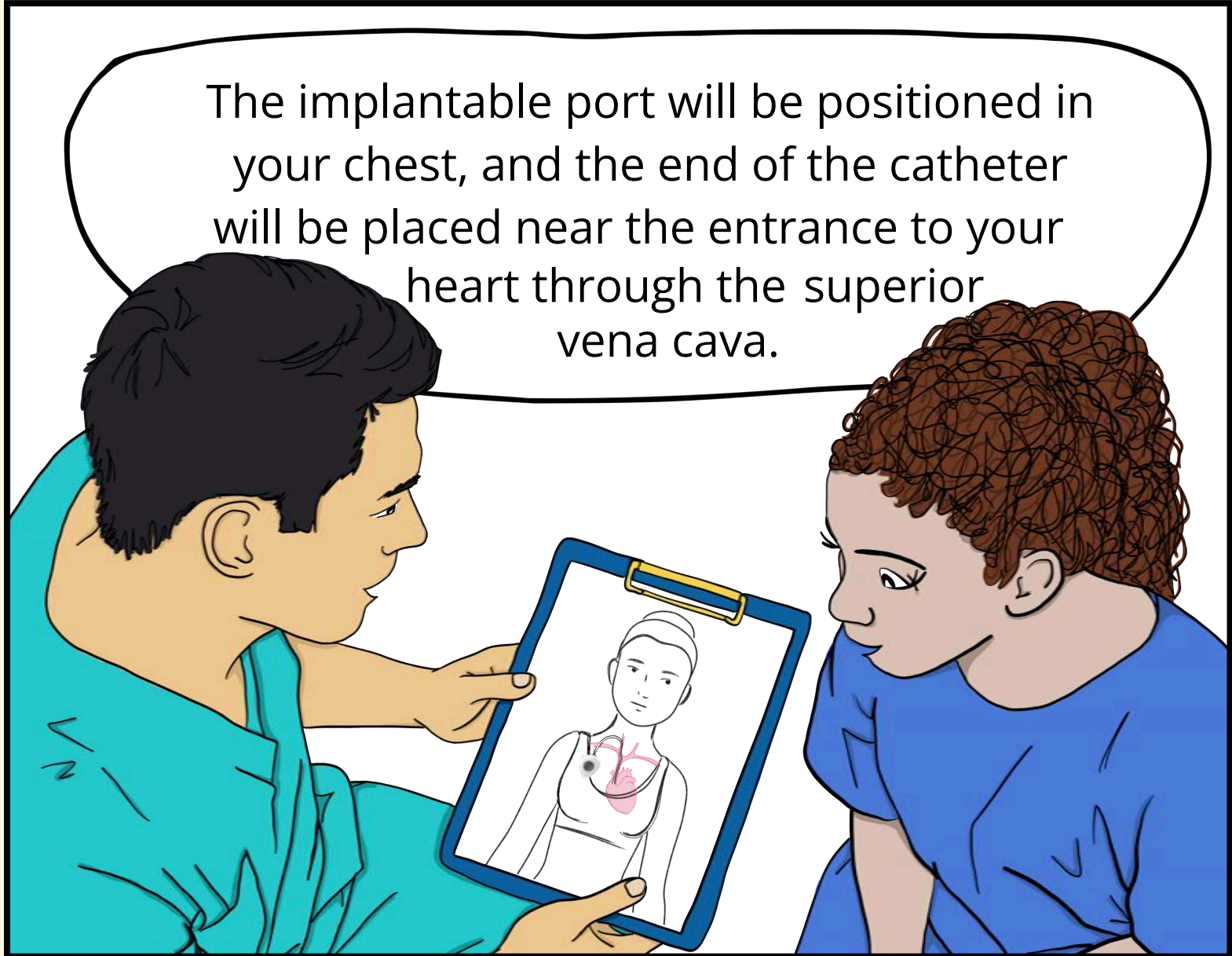
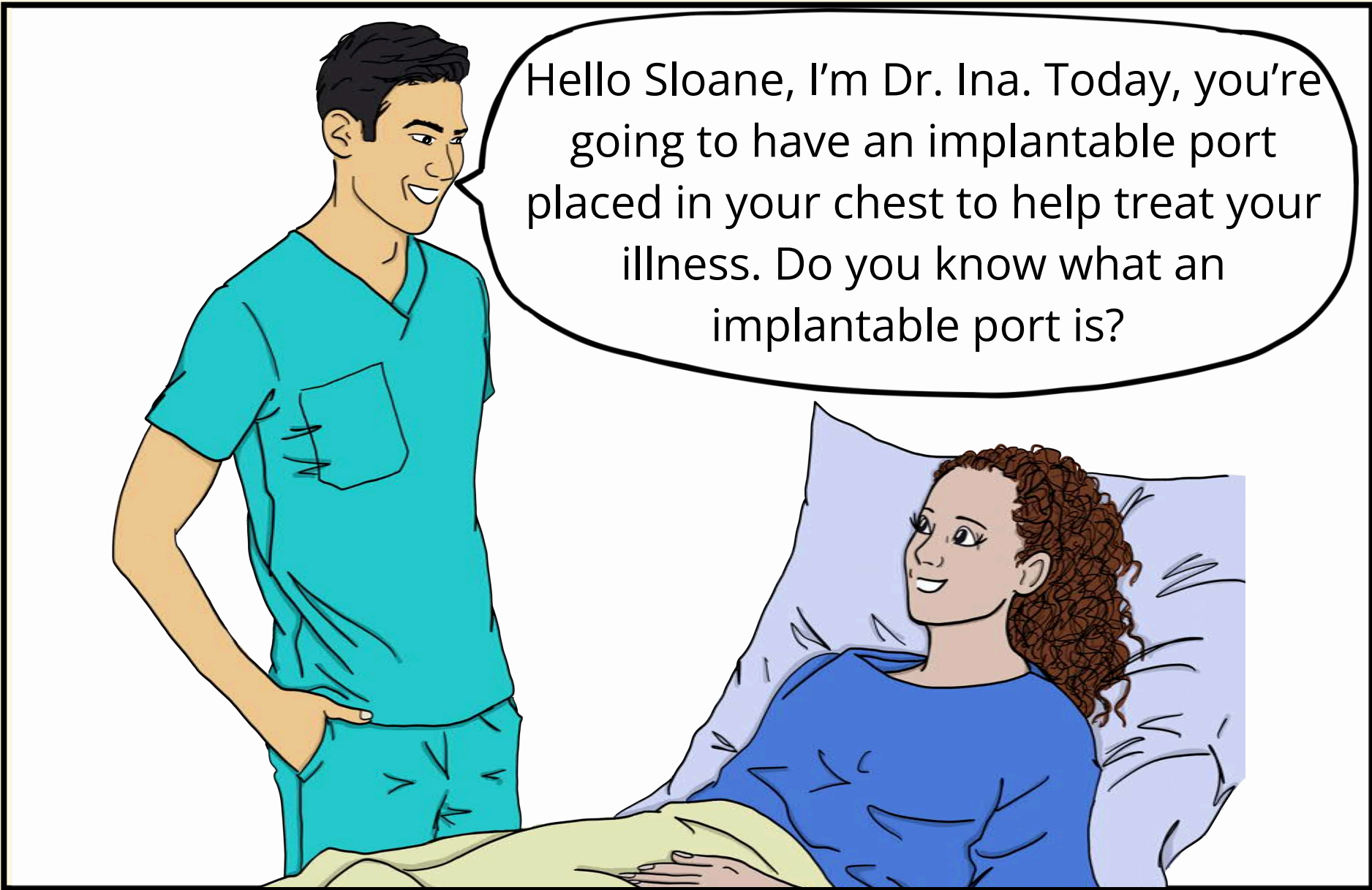


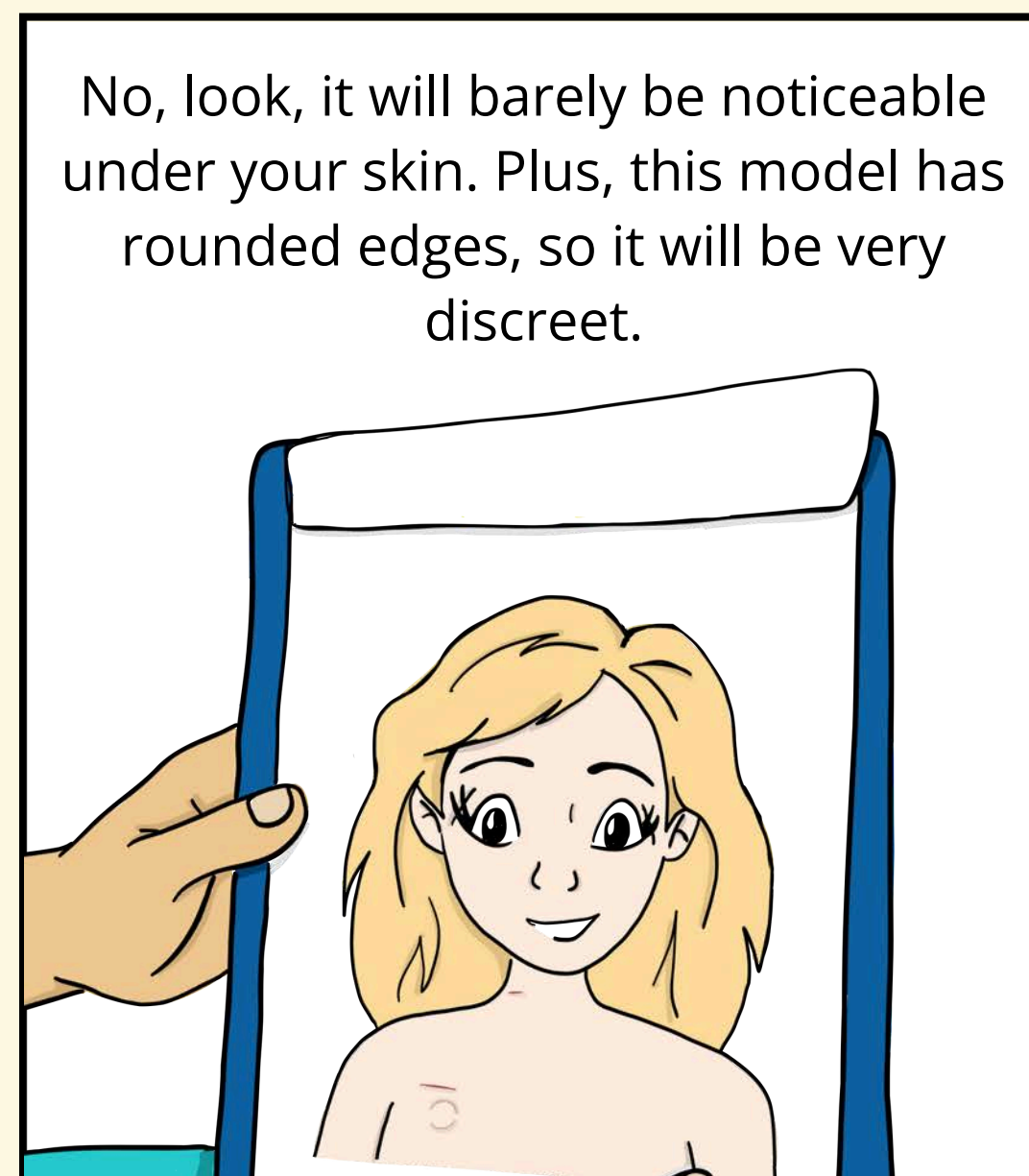
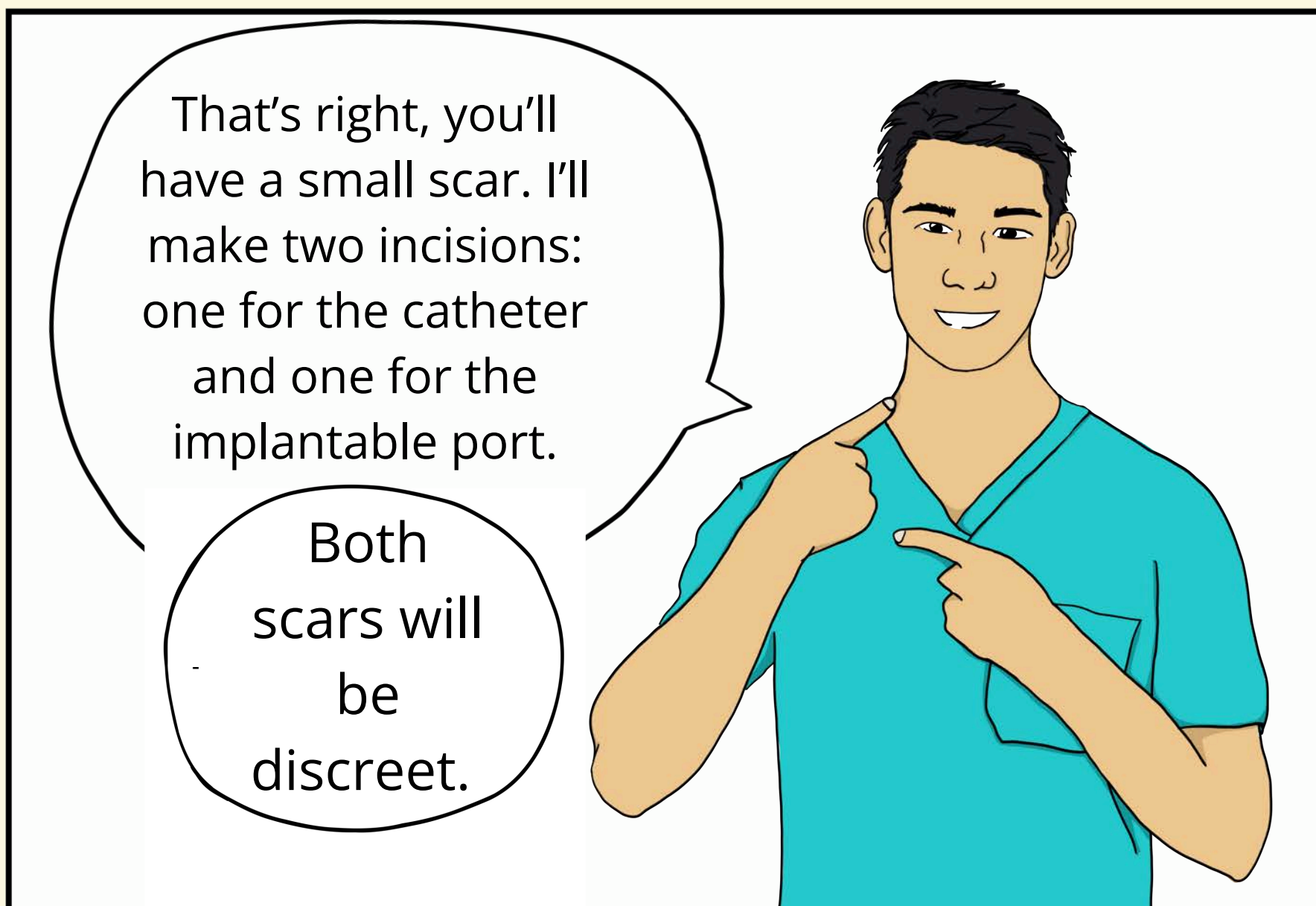
Find these memo cards at the end of the comic book!





Chapter 3: The operation

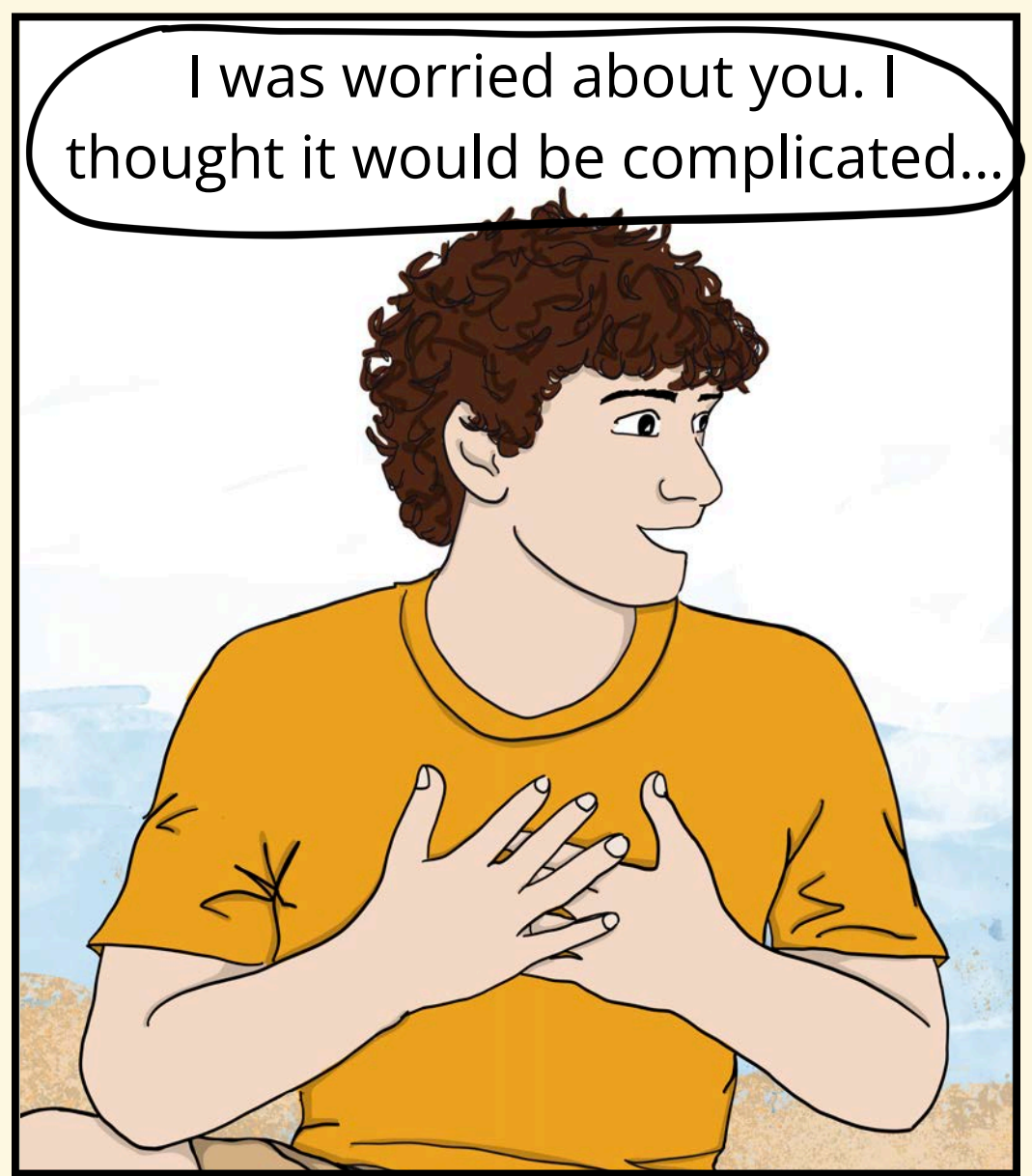
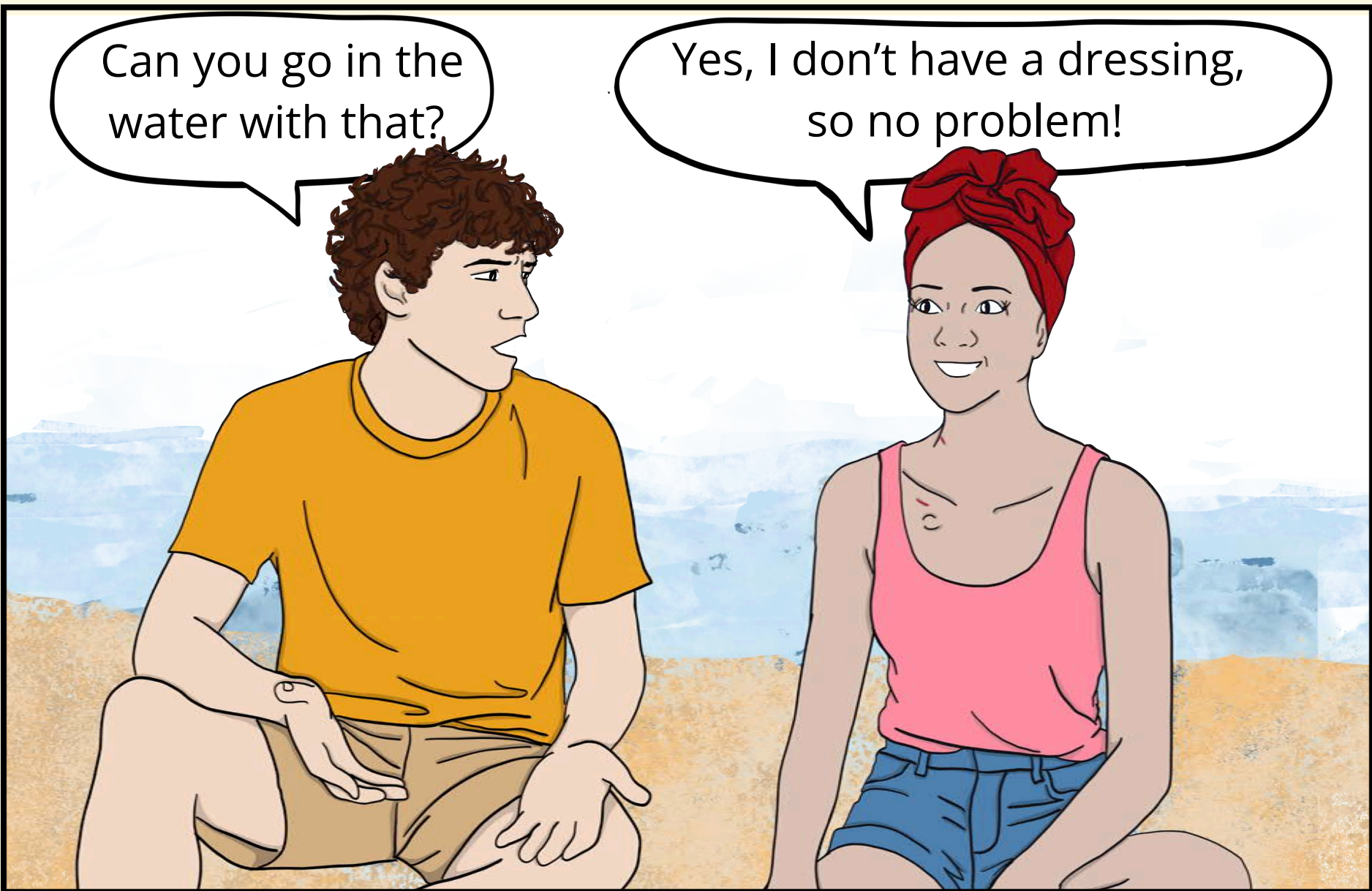




Chapter 4: The first chemotherapy session



Epilogue: Holidays at the beach



Not at all. The implantable port helps me get better, but it
doesn't impact my life!



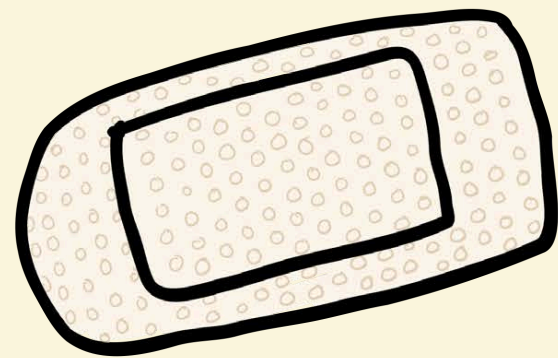
End

Memo Card

POST OPERATIVE

After the implantable port insertion, I will have either:

a dressing



that I keep



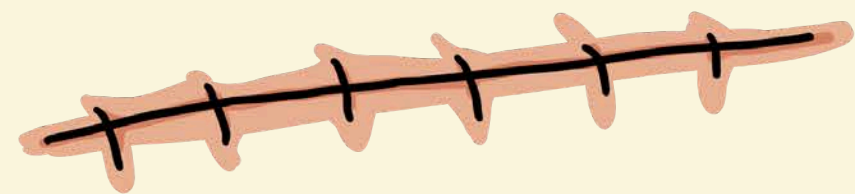
I do not wet the dressing



To ensure proper healing, I avoid carrying heavy loads and repetitive movements



glue



it will go away after



no pool



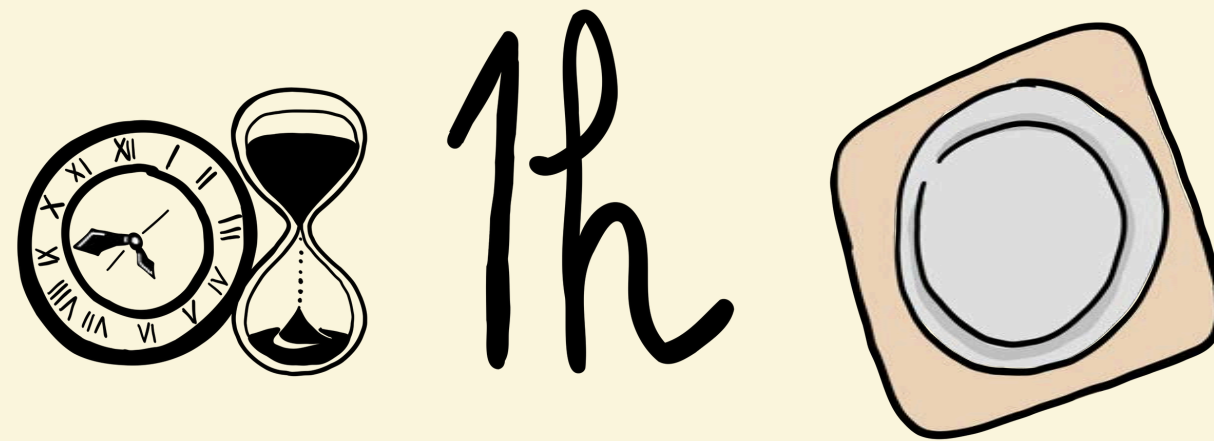
no bath



Memo Card

Chimiotherapy

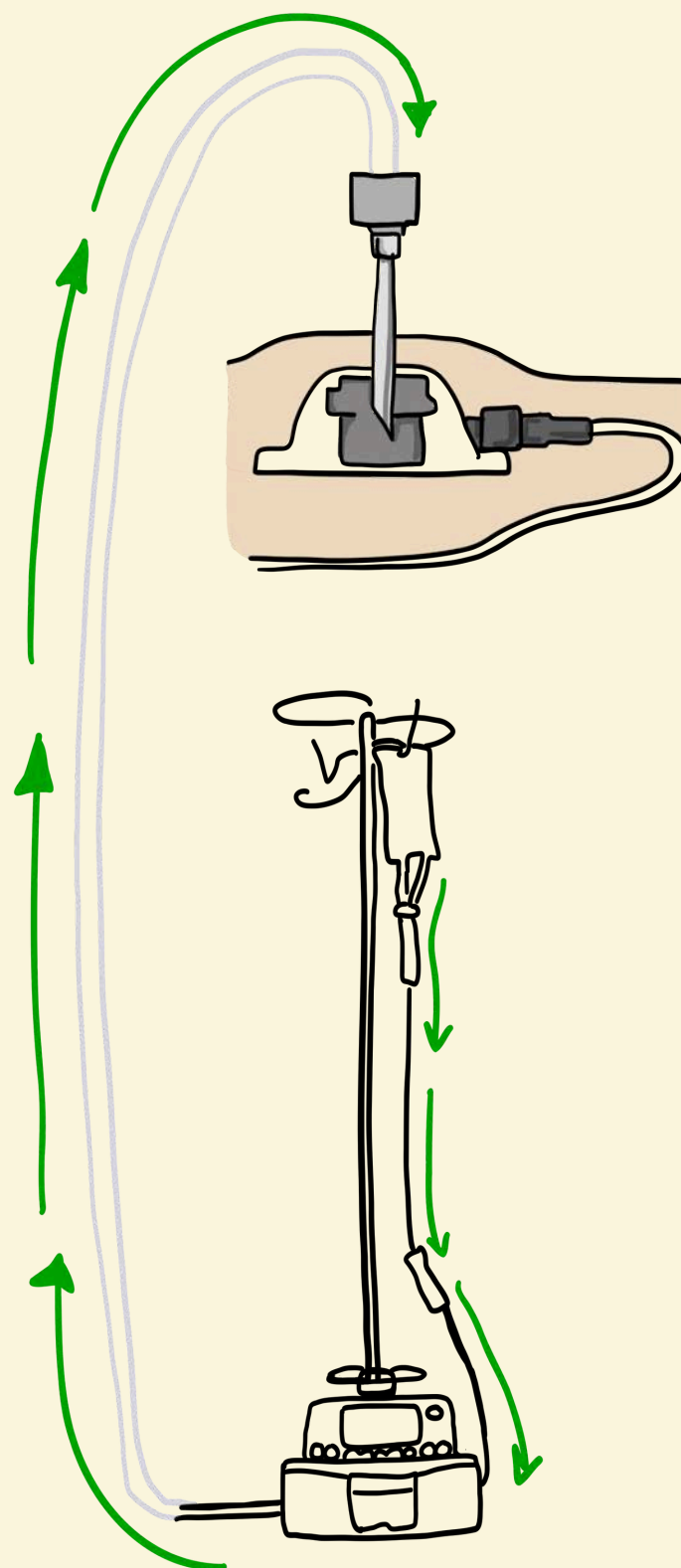
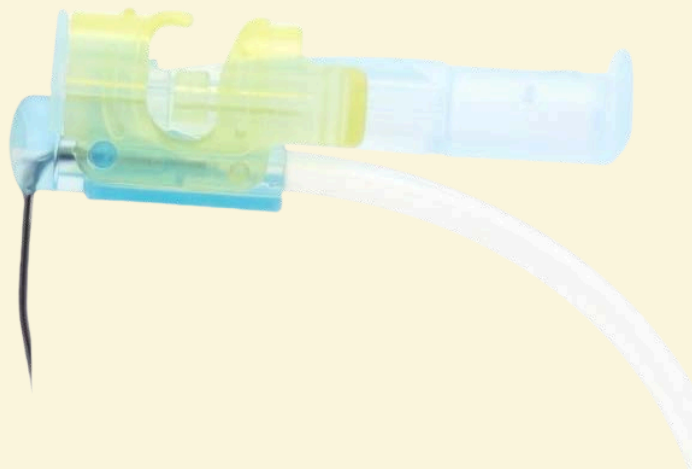
One hour before chemotherapy, I apply an anaesthetic patch to the implantable port.



Non-safety Huber needle

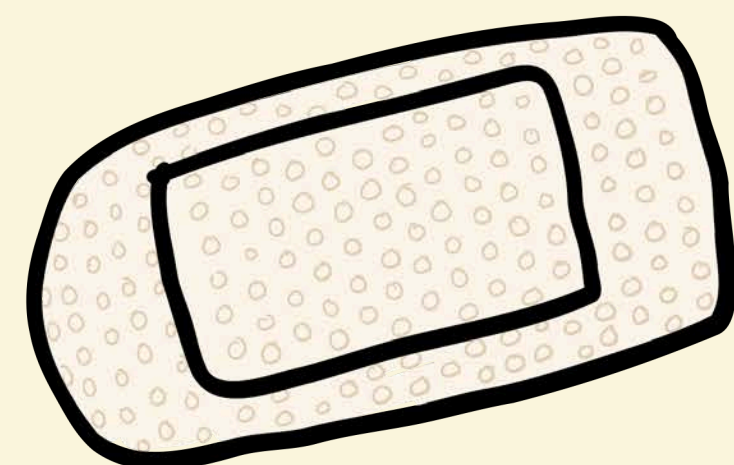


Safety Huber needle



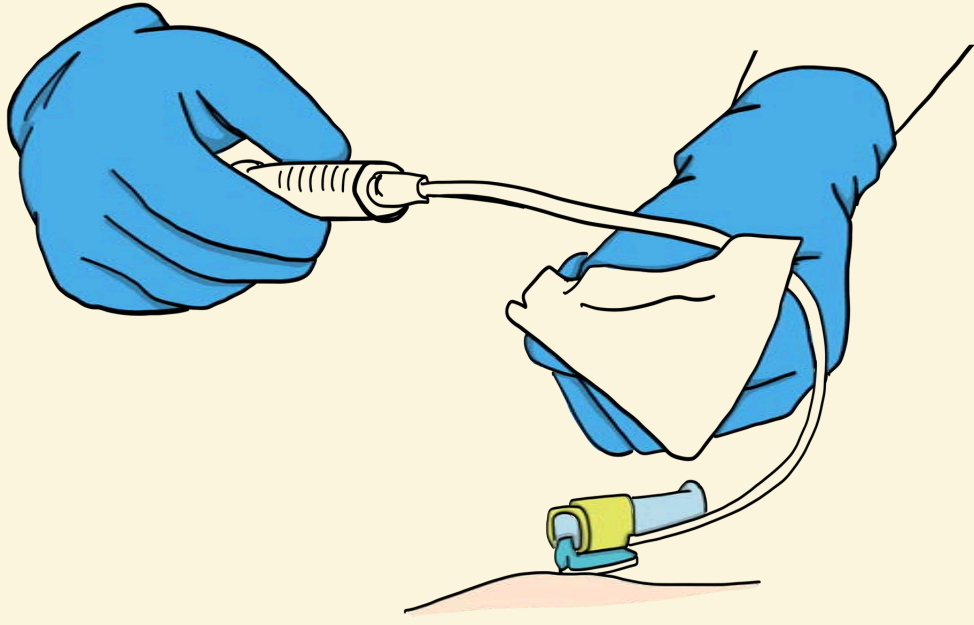
The Huber needle is inserted into the implantable port. Treatments are administered via the port.

1 hour after chemotherapy, I keep the dressing on.



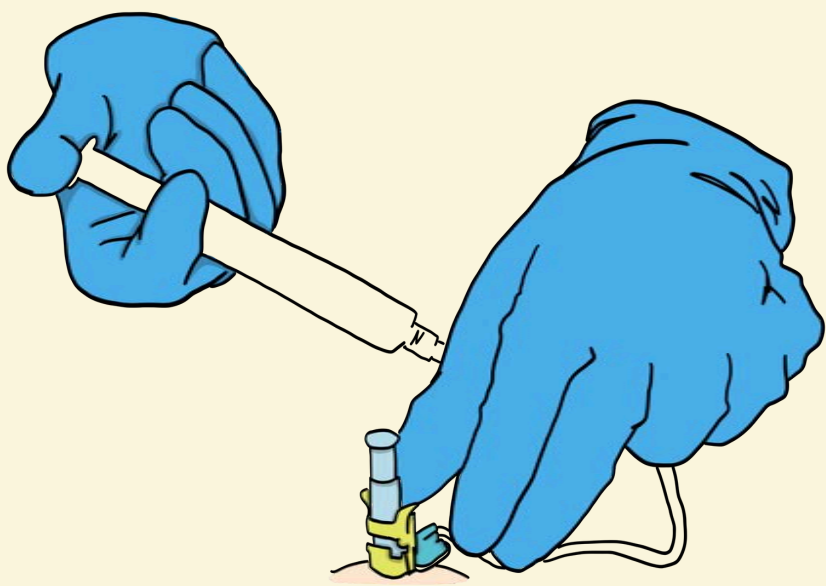
Memo Card

Huber needle removal



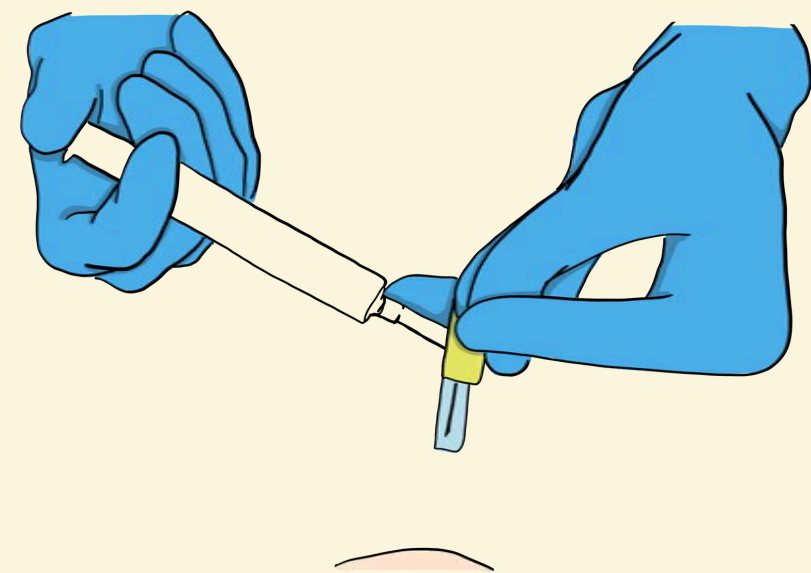
1

A 10mL syringe (with saline solution) is connected to the end of the Huber needle tubing.



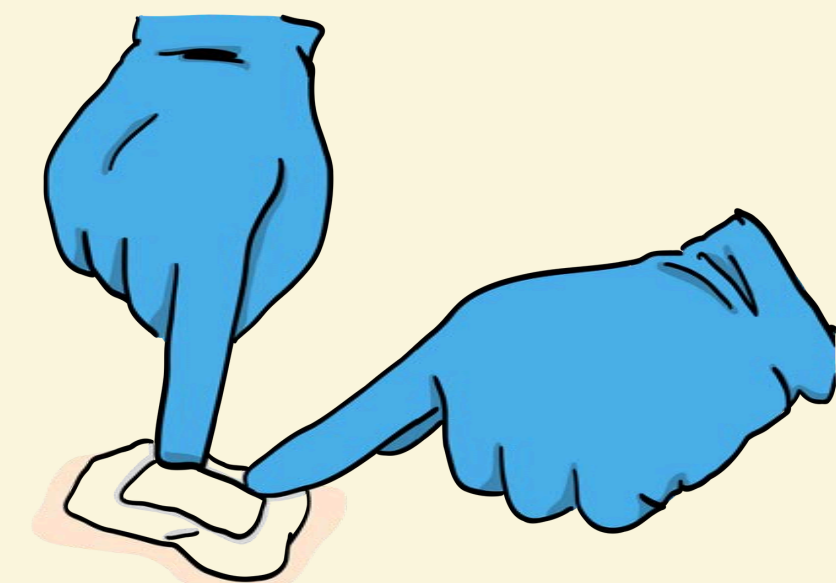
2

Once we're done with rinsing, the PPS Safety Huber needle is lifted horizontally. It has a protection on the needle. Thus, nurses will not be able to accidentally injure themselves when removing the device.



3

Then the needle is extracted from the implantable port with a smooth upward movement.



4

When the Huber needle is removed, a dressing is applied to the port to prevent infection. The dressing should be left on for 48 hours.