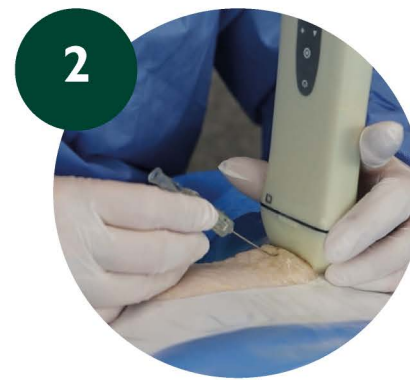


Proximal-Cut PICC Catheter Insertion



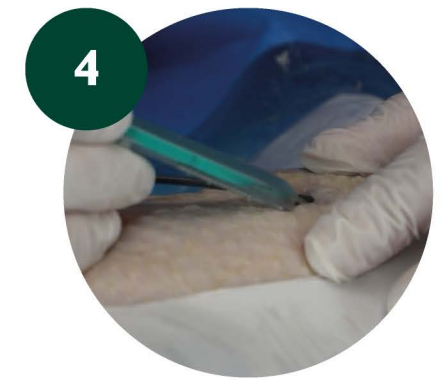
1 Local anesthesia



2 Ultrasound-guided puncture



3 Introduce the guidewire



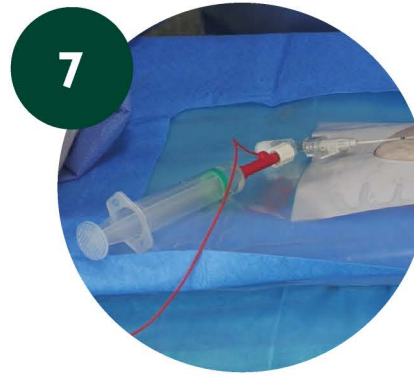
4 Small incision



5 Introduce microintroducer and remove dilator and guidewire



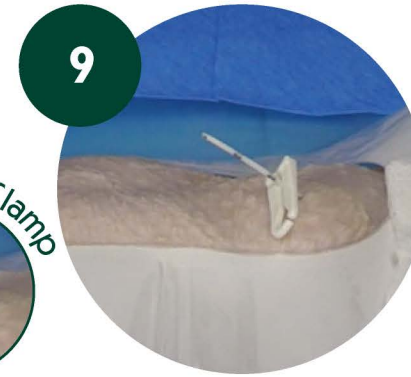
6 Advance the PICC



7 Check catheter tip position using ECG-IC



8 Fixation and trimming



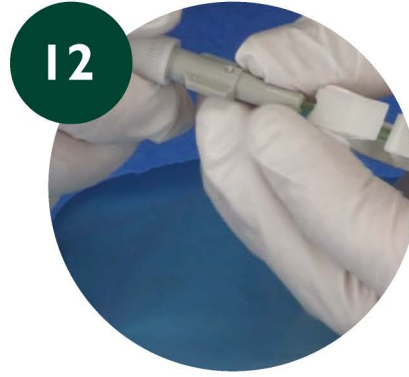
9 Proximal cut



10 Proximal connection



11 Unclamp



12 Remove adaptor



13 Proximal PICC



14 Place the lower part of the SAS



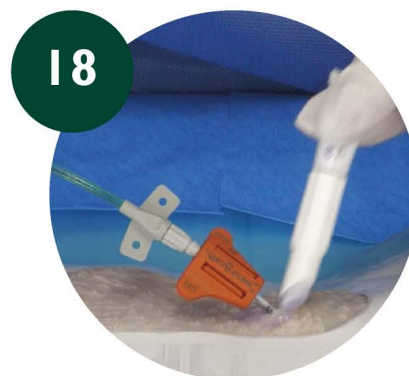
15 Place the upper part of the SAS and close the SAS



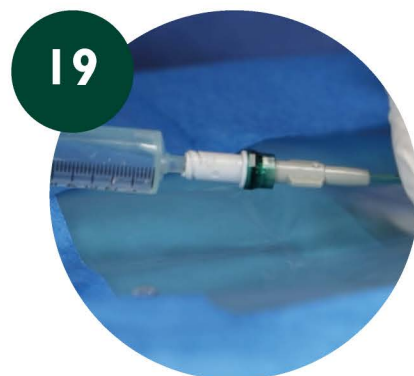
16 Proximal PICC - SAS



17 Check catheter tip position using ECG-IC



18 Cyanoacrylate



19 Flush and seal



20 Protective cap



21 PICC placement



22 PICC stabilization and exit-site protection