

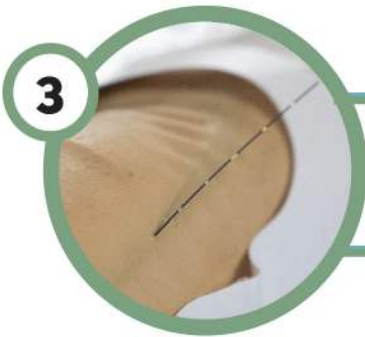
1

Punção com a agulha



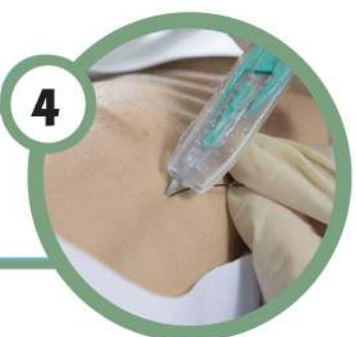
2

Inserir o guia metálico



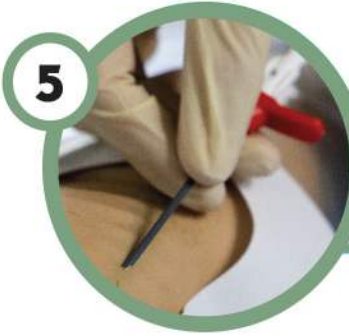
3

Retirar a agulha



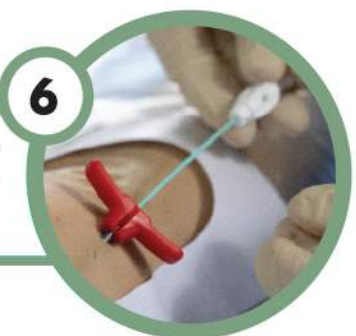
4

Fazer uma pequena incisão com o bisturi



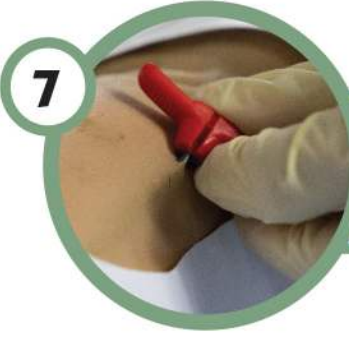
5

Inserir o dilatador e o introdutor destacável



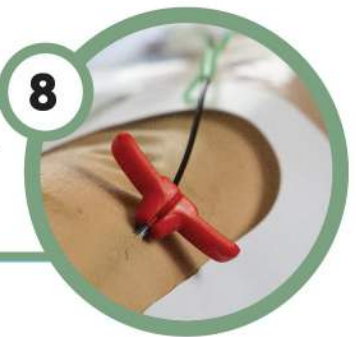
6

Remover o dilatador e o guia metálico



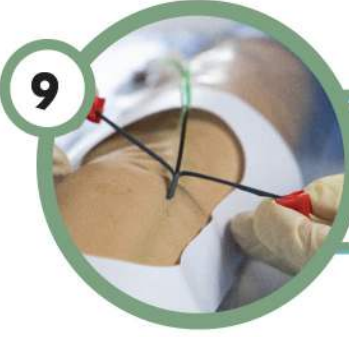
7

Parar o refluxo sanguíneo



8

Inserir o cateter até ao fim



9

Retirar o introdutor lentamente



10

Fixar o cateter com um dispositivo sem suturas



Value Life

TÉCNICA DE INSERÇÃO: MICRO SELDINGER

SELDINGER MODIFICADO